

# ApeosWare Management Suite 2 Setup Guide

- (1) This manual may not be edited, modified or copied in whole or part without the written consent of the publisher.
- (2) Some parts of this manual are subject to change without prior notice.
- (3) The screen shots and the illustrations in this manual are used as examples. They may differ from yours depending on the model, the software, or the OS.

Product information is provided at our Internet homepage. Visit [https://www.fujifilm.com/fbglobal/eng/product/aw\\_manage\\_suite](https://www.fujifilm.com/fbglobal/eng/product/aw_manage_suite)

ABBYY®FlexiCapture® is registered trademarks or trademarks of ABBYY.

Adobe, the Adobe logo, Acrobat, PostScript, and Reader are trademarks or registered trademarks of Adobe in the United States and other countries.

Apple, Mac, Mac OS and Safari are trademarks of Apple Inc., registered in the U.S. and other countries.

Google, Google Chrome, Google Drive, Android and Chrome OS are trademarks or registered trademarks of Google LLC.

IOS is a trademark or registered trademark of Cisco in the U.S. and other countries and is used under license.

Intel, Intel Core, and Xeon are trademarks of Intel Corporation in the United States and other countries.

Linux is the registered trademark of Linus Torvalds in the United States and other countries.

McAfee and VirusScan are registered trademarks or trademarks of McAfee, Inc., and/or its affiliates in the United States and/or other countries.

Microsoft, Windows, Active Directory, ActiveX, Excel, Microsoft Edge, OneDrive, PowerPoint, SharePoint, SQL Server, Visual Basic, and Windows Server are registered trademarks of US Microsoft Corporation in the U.S. and other countries.

Kofax, the Kofax logo, and OmniPage are trademarks or registered trademarks of Kofax, Inc. and/or affiliated companies in the United States and/or other countries.

Oracle and Java are registered trademarks of Oracle and/or its affiliates.

© Panasonic Solution Technologies Co., Ltd.2020

PaSoRi is a registered trademark of Sony Corporation.

QR Code is a registered trademark of DENSO WAVE INCORPORATED.

Red Hat is a trademark of Red Hat, Inc.

Vine Linux is a registered trademark of Project Vine and Vine Caves, Ltd. in Japan and other countries.

Wi-Fi is a registered trademark of Wi-Fi Alliance.

Other company names or product names are registered trademarks or trademarks of each company.

Microsoft product screen shots reprinted with permission from Microsoft Corporation.

Microsoft Corporation. All rights reserved.

This application has been created independently of Objective Corporation Limited involvement and Objective Corporation Limited does not endorse or guarantee the integration of this application with Objective licensed software.

This software contains Beijing Founder Electronics Co., Ltd fonts.

This software contains Universal Font Scaling Technology From Monotype Imaging Inc.

Sentinel®RMS ©SafeNet, Inc. All rights reserved

The manual of this product includes descriptions of ApeosWare Management Suite, which is also compatible with the following models sold in the past by Fuji Xerox Co., Ltd.

For the compatible models, refer to our official website.

[https://www.fujifilm.com/fbglobal/eng/product/aw\\_manage\\_suite](https://www.fujifilm.com/fbglobal/eng/product/aw_manage_suite)

The manual of this product includes Fuji Xerox products, licensed from Xerox Corporation.

The distributor of the products is FUJIFILM Business Innovation Corp.

Xerox, Xerox and Design, Fuji Xerox and Design, DocuCentre, DocuShare, DocuPrint, as well as PrintXchange are registered trademarks or trademarks of Xerox Corporation.

FUJIFILM and FUJIFILM logo are registered trademarks or trademarks of FUJIFILM Corporation.

ApeosPort, ApeosWare, ApeosWare logo, DocuWorks, and Working Folder are registered trademarks or trademarks of FUJIFILM Business Innovation Corp.

# Table of Contents

Table of Contents .....	3
Conventions .....	5
About Manuals and Accessory Tools.....	5

## 1 Setup

Required Environment .....	8
Network .....	8
Server Configuration .....	10
All-in-One Configuration .....	10
Multiplexing Configuration (Only Enterprise Edition) .....	10
Distributed Configuration .....	11
Preparation .....	15
Checking the PC environment .....	15
Setting Devices .....	16
If ApeosWare Management Suite Server Is Changed to SSL .....	17
Required Additional Software and Files for Use of the Flow Management Option .....	18
About List File of Serial Numbers .....	19
About Installation when Using Antivirus Software .....	19
About Installation of IIS (Internet Information Services) .....	20
SQL Server .....	22
All-in-One Configuration Setup .....	25
Flowchart of Setup .....	25
Install Required Software .....	26
How to Install SQL Server 2019 Standard on Server .....	26
Install ApeosWare Management Suite by Performing the Following Steps. ....	26
Register the Program or Port to the Rule of the Reception of the Firewall .....	28
Register the Port to the Router as an Exception .....	32
Installing Tools on the Client PC .....	36
Multiplexing Server Configuration Setup .....	37
Distributed Configuration Setup .....	38
Flowchart .....	38
Set up the Database Server .....	40
Set up the Report Server .....	40
Set up the Main Server .....	42
Setting Up a Print Application Server .....	44
Update Setting File .....	45
Setting Up a Print Input/Output Server or a Mobile Server .....	46
Setting Up OCR Server .....	46
Setting Up the Flow Server .....	48

Install Image Log Server. ....	49
Register the Port to the Router as an Exception .....	51
Installing Tools on the Client PC .....	56
License Activation .....	57
Activating the License via the Internet .....	57
Activating the License with File .....	58
Delete serial number of software .....	60
FUJIFILM Business Innovation Support Centre .....	62
What to do after the setup .....	62
Log in ApeosWare Management Suite. ....	63
Settings of Single Sign-On Feature .....	63
When Distributed Print Servers Are Not Displayed Correctly After Installation .....	64

## 2 Repairing, Changing, and Uninstalling the Software

Repair a Program .....	65
How to Change a Program (Adding options) .....	65
Uninstall a Program .....	66
Overview .....	66
Uninstall a Tool .....	67
Deactivate the License for the Software to Be Uninstalled .....	67
Uninstall Software and Options .....	69
How to Delete the Database Manually .....	69
Allocation of Amount of Memory Used .....	74
Overview .....	74
Option .....	74
Allocate Amount of Memory Used .....	75
Return Amount of Memory Used to Initial Status .....	76
Operation Log .....	76

# Conventions

The following icons are used in this guide, depending on the content described.



## Important

This indicates information that you should know and information that you should confirm before operation.



## Note

This indicates additional information on operations.



## Refer

This indicates a reference source.

The following conventions are used in this guide.

- “ ” Indicates messages, file names, folder names, entered values, entered examples, and emphasized contents. It also indicates cross-references within this guide.  
Example: “XXX” is displayed.
  - < > Keys of the keyboard.
  - [ ] Indicates the name of a setting item displayed on the computer screen. Moreover, it indicates the name of a window, menu, dialog box, tab, or button displayed.  
Example: Click [OK].
  - { } Indicates values such as a drive name or user name that change when the operation is executed.  
Example: “{Model name}:{Serial number}({IP address or host name}) of the target device is displayed.
  - > Indicates a path to proceed to a certain item within a procedure on a menu or a web page.  
Example: Select [Start] > [Programs].
  - “ ” A manual to be referenced.
- Microsoft Windows Operating System is referred to as “Windows” in this guide.
  - A personal computer is referred to as “PC” in this guide.

# About Manuals and Accessory Tools


## How to View Manuals

Log in to ApeosWare Management Suite and select [Help] > [User’s Manual (View PDF Document)] from the header menu. As the manual list on the network is displayed, click the manual you want to download.

In the case of an accessory tool, click the [Help] button of the accessory tool. As the manual list on the network is displayed, click the manual you want to download.

ApeosWare Management Suite manual list is shown below.

Manual Name	Overview
Setup Guide (this document)	This section describes the setup method of ApeosWare Management Suite.
Installation and Operation Guide	This section describes the outline of each feature of ApeosWare Management Suite.

Manual Name	Overview
Features Guide	This section describes the setting and maintenance methods of ApeosWare Management Suite.
Features Guide Flow Management Option	Describes how to create the flow to deliver documents. Uses Flow Management Option.
Features Guide Flow Management Option Messages	Describes messages of Flow Management Option and how to handle them.
Features Guide On Demand Print Terminal	Describes the feature of On Demand Print Terminal and its basic operation. This feature is available only in Japan.
Flow Management Option Help	Describes items on the window of Flow Management Option.
Paper Form Help	Describes items on the window of Paper Form Editor and Paper Form Management.
Accessory Tools Help	Describes items on the window of Data Input Console, Diagnostics Utility, Popup Messenger, and Update Service.
Job Log Analyzer User Guide	Describes the functions and usage of Job Log Analyzer, which creates a list report and a graph accounting job log files.
Supplement Guide	Describes the features that are not part of the main guide.   <b>Note</b> This feature is available only in Australia.
Migration Guide	This section describes the procedure to perform update installation from ApeosWare Management Suite 2.0 or later to ApeosWare Management Suite 2.2 and the procedure to upgrade from ApeosWare Management Suite 1.x to ApeosWare Management Suite 2.2 using a migration tool.

## Accessory Tool List and How to Start

Tool Names	Overview	How to Start Tool
Data Input Console (Data Input Console)	Sets a large amount of information simultaneously.	Select [FUJIFILM ApeosWare Management Suite] > [Data Configuration Tool] on Startup menu in Windows program.
Diagnostics Utility (Diagnostics Utility)	Diagnoses the problem and retrieves the PC log when a network failure occurs.	Select [FUJIFILM ApeosWare Management Suite] > [Diagnosis Tool] on Startup menu in Windows program.
Paper Form Editor	Creates a form template file for Paper Form Option.	Select [FUJIFILM ApeosWare Management Suite] > [Paper Form Editor] on Startup menu in Windows program.
Paper Form Management	Manages the file (resources) which Paper Form Option needs to operate, and deletes the form.	Select [FUJIFILM ApeosWare Management Suite] > [Paper Form Management] on Startup menu in Windows program.
Popup Messenger (Popup Messenger)	Receives a notification about the print job and displays it on the client PC.	Starts automatically after activating the PC that Popup Messenger has been installed. When Popup Messenger does not start or is restarted after it is exited, select [FUJIFILM Popup Messenger] > [Popup Messenger] on Startup menu in Windows program.

Tool Names	Overview	How to Start Tool
Update Service (Update Service)	Updates ApeosWare Management Suite software.	Starts automatically after activating the PC that Update Service has been installed. When Update Service does not start or is restarted after it is finished, select [FUJIFILM ApeosWare Management Suite] > [Update Service - Update Now] on Startup menu in Windows program. When updating the ApeosWare Management Suite software, clear the caches (temporary Internet files) of the web browser after updating it, and then operate it again.
Job Log Analyzer (Job Log Analyzer)	Creates a table report and a graph tallying the job log files.	Select [FUJIFILM] > [Job Log Analyzer] on Startup menu in Windows program.

# 1 Setup

## Required Environment

For the latest operating environment, please visit our official website.

## Network

Operates on TCP/IP protocol. Below are requirements.

- The static IP address of IPv4 or IPv6
- DNS



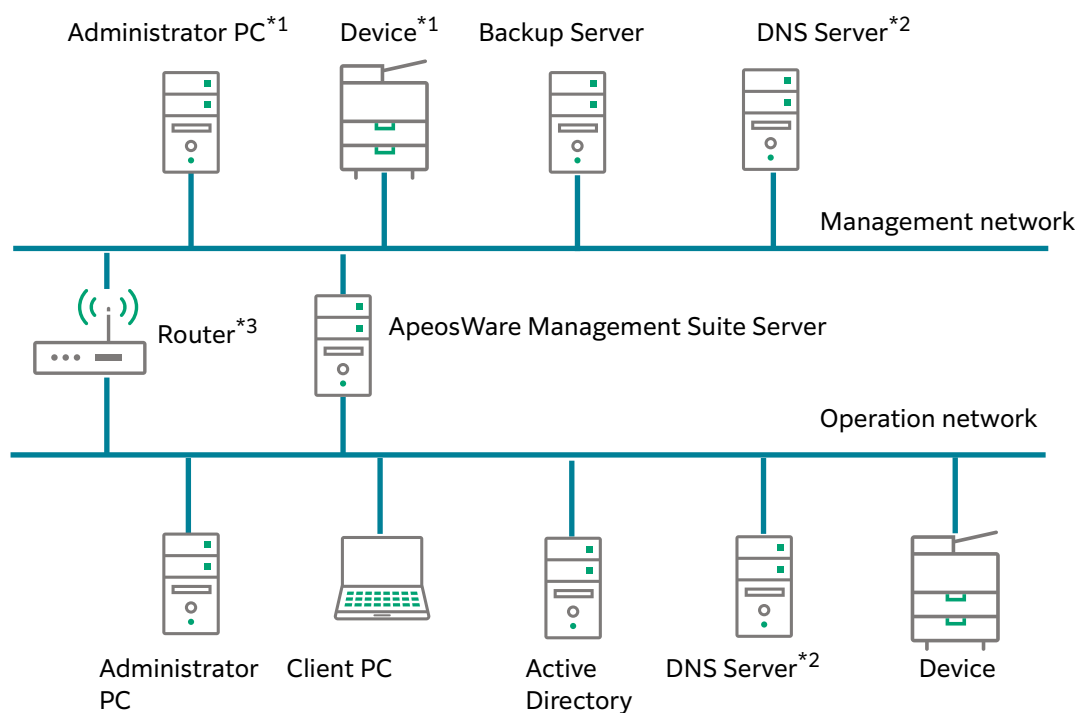
### Note

Setting a dynamic IP address set by DHCP may cause ApeosWare Management Suite to work incorrectly.

### Configuration of Two Network Cards

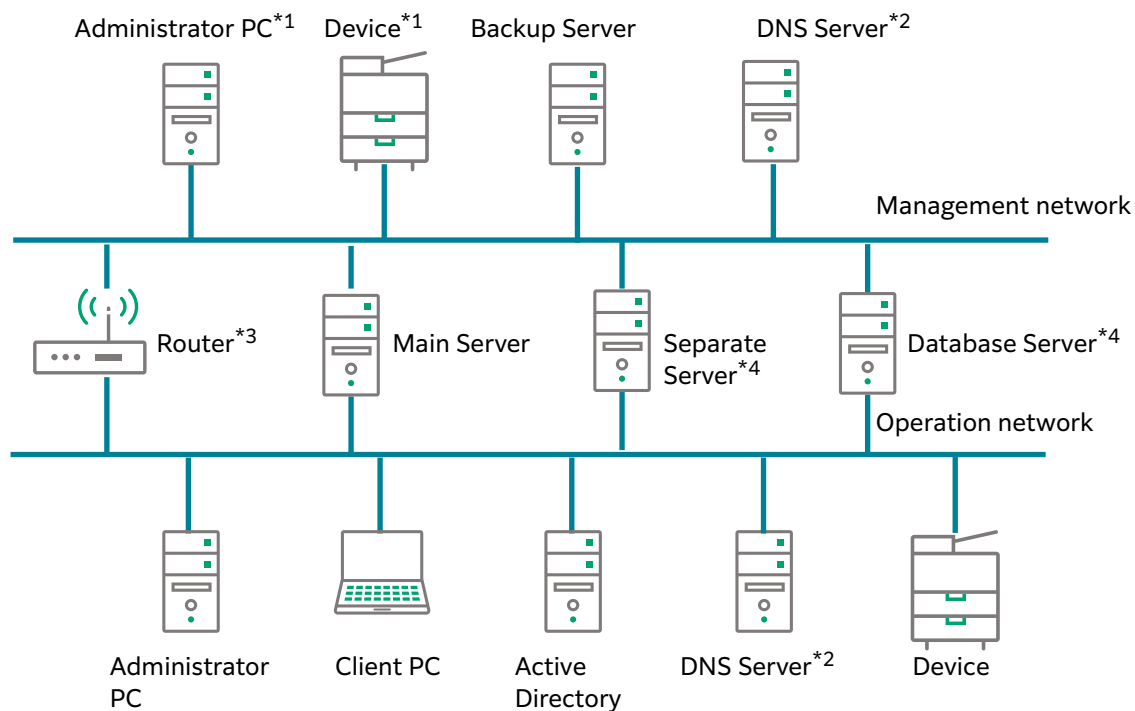
The main server of ApeosWare Management Suite can access logical networks called an operation network and a management network. In the routing environment, the operation network is connected to client PCs, Active Directory, a DNS server, and devices, and the management network is connected to Administrator PC and a backup server.

#### ■ For Entry Edition





■ For Enterprise Edition



- \*1 There are restrictions as below in the environment in which routing is not performed between the operation network and the management network.  
Unable to log in to ApeosWare Management Suite from the management network  
Address architecture for each network should be separated. If address architecture for each network is not separated, SNMP trap of the device may not be received.
- \*2 Give priority to the DNS server on the operation network side if you implement a DNS server on both the operation network and the management network.
- \*3 In the routing environment, you may experience a decrease in performance although you can use all the features.
- \*4 Only when the server configuration is Distributed Configuration. For details of each server, refer to "Distributed Configuration" (P.11).



Note

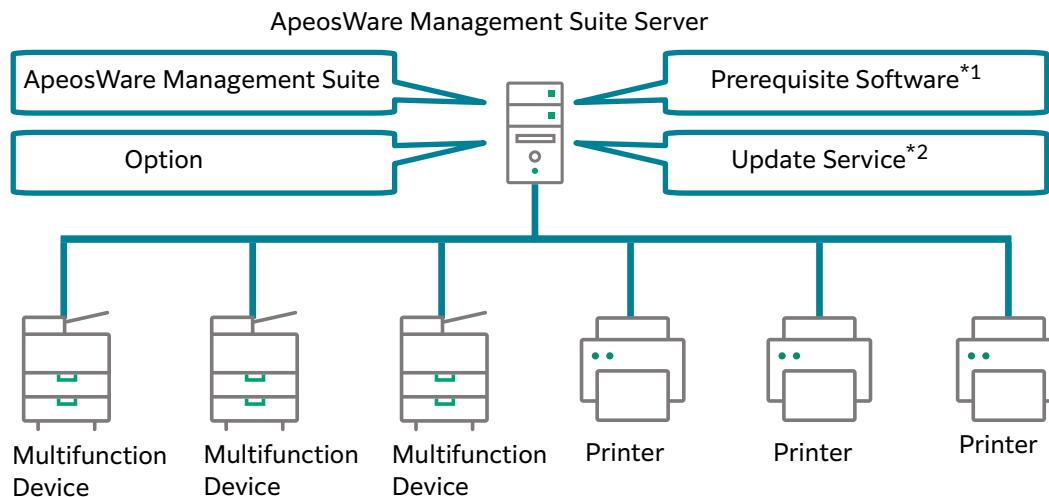
Enable the management network after enabling the operation network at installation. Set the access order as to access the operation network first, and next the management network.

# Server Configuration

This section describes the server configuration of ApeosWare Management Suite.

## All-in-One Configuration

In this configuration, ApeosWare Management Suite software is installed in one PC.



\*1 For the latest operating environment, please visit our official website.

\*2 It is required to receive [FUJIFILM Business Innovation Notices].

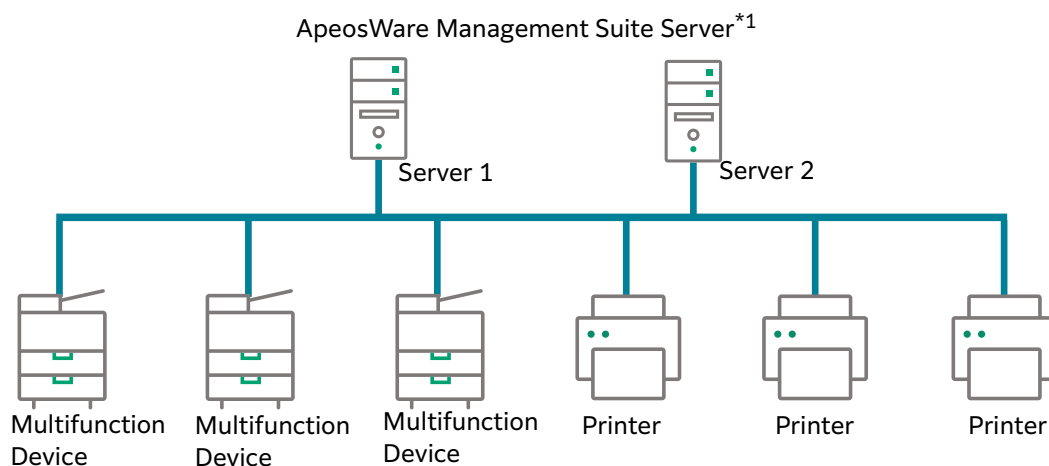


Refer

"All-in-One Configuration Setup" (P.25)

## Multiplexing Configuration (Only Enterprise Edition)

In this configuration, ApeosWare Management Suite software is installed in two PCs. It is operated by registering a device to each PC.



\*1 The contents installed on each server are the same as those of the server in " All-in-One Configuration Setup" (P.25)



Refer

"Multiplexing Server Configuration Setup"

## Distributed Configuration

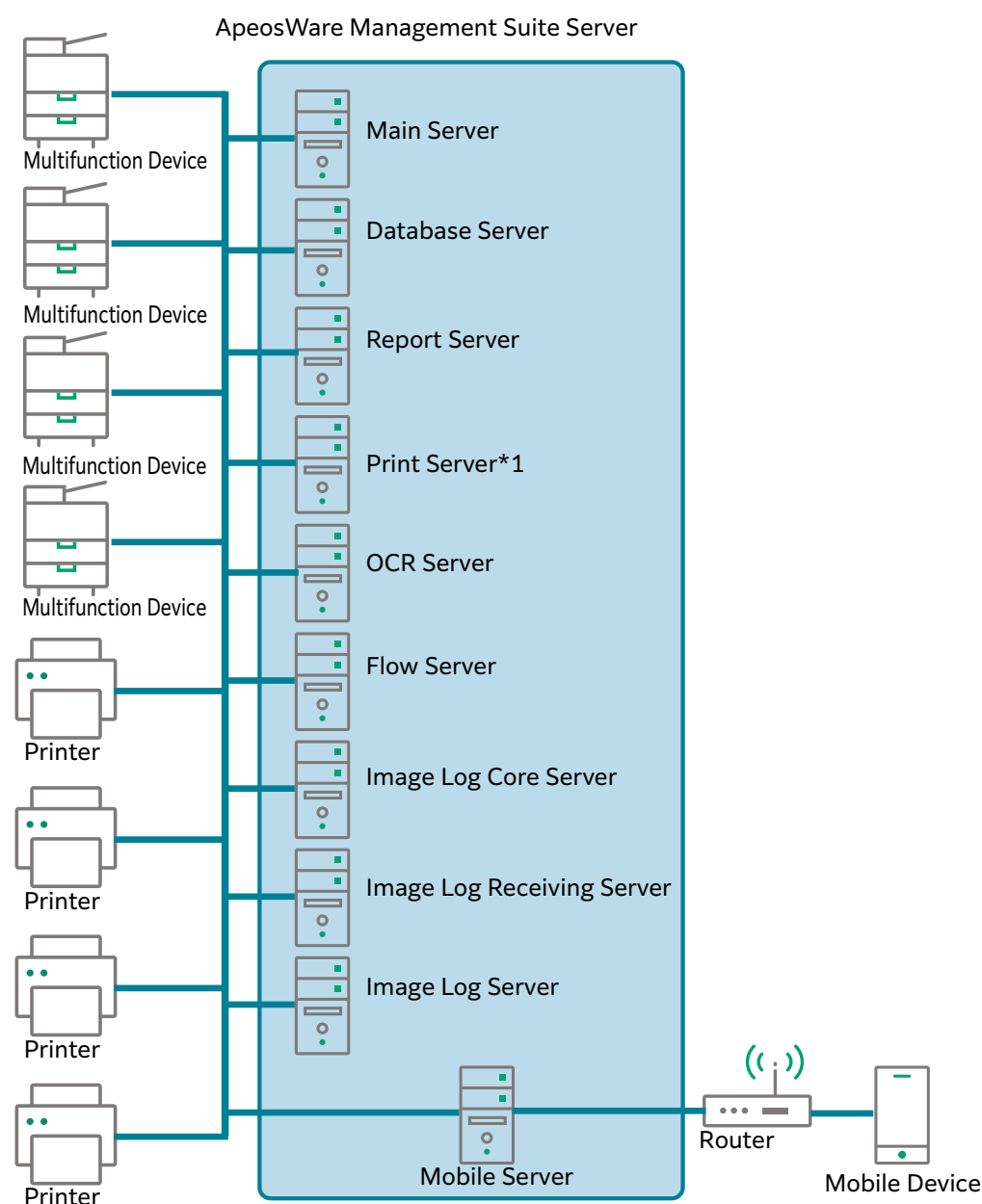
This configuration uses multiple PCs with ApeosWare Management Suite software installed individually. It is expected to increase the processing ability and distribute the network load. The specific servers that can be distributed vary between the Enterprise Edition and the Entry Edition.






Refer

"Distributed Configuration Setup" (P.38)

### Enterprise Edition



\*1 Either the print application server or the print input/output server.  
Different printer servers cannot coexist in the same system.

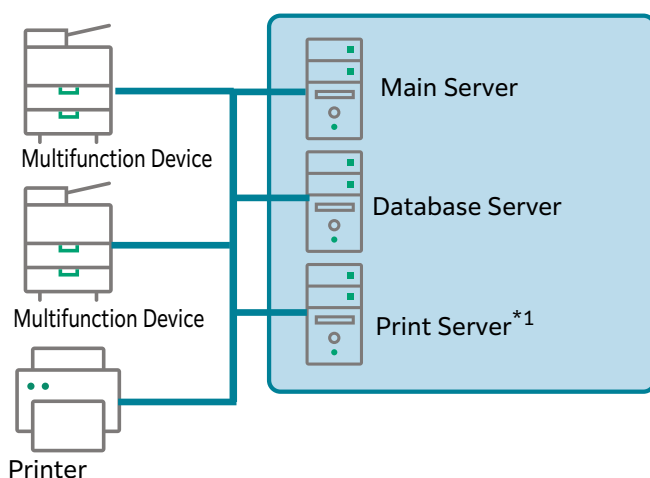
Server	Required/ Optional	Number of Deployable Devices	Descriptions
Main Server	Required	1	A PC to which ApeosWare Management Suite is installed The Flow Management Option does not need to be installed to implement a flow server.
Database Server	Optional	1	A database PC to which SQL Server is installed. Separating the database server from the main server allows to distribute the load.
Report Server	Optional	1	A PC for report processing. The SSRS (SQL Server Reporting Services) option of SQL Server is required. Separating the dedicated server for report creation from the main server allows to reduce the load on the main server.
Print Application Server	Optional	Up to 4 (including the main server)	<p>PCs with [Print Management] installed Options for the print management can be added. Separating the server which provides all the feature of the print management allows to reduce the load on the main server. In addition, locating the print application server in an appropriate place on the network allows to reduce network traffic. Targets of print can be held by each server so that the independence of the servers increase.</p> <p> <b>Note</b></p> <ul style="list-style-type: none"> <li>• The print application server cannot coexist with the print input/output server in the same system.</li> <li>• When the print application server is set up, the following options are not available.</li> <li>• Cost Recovery Option</li> <li>• On Demand Print Terminal</li> </ul>
Print Input/ Output server	Optional	Up to 25 (including the main server)	<p>PCs that have installed only the feature of send/receive print data from [Print Management] Options for the print management can be added. Separating the receiving and analyzing print jobs and the forwarding process to the device allows to reduce the load on the main server. In addition, locating the print input/output server in an appropriate place on the network allows to reduce network traffic. Since the features other than input/output of print jobs are provided by the main server, the control can be easier.</p> <p> <b>Note</b></p> <p>The print input/output server cannot coexist with the print application server in the same system.</p>
OCR Server	Optional	Up to 3	<p>PCs for OCR processing and image processing (Skew Correction, Format Conversion, Document Split etc.) These servers are used when the features of Scan Settings and File Management Service are used. Separating the OCR server from the main server allows to reduce the load on the main server.</p> <p> <b>Note</b></p> <p>The servers cannot be used for the OCR process of Image Log Management Option.</p>

Server	Required/ Optional	Number of Deployable Devices	Descriptions
Flow Server	Optional	1	A PC with Flow Management Option and SQL Server installed The server imports, processes, and distribute documents. Separating the flow server which processes flow jobs from the main server allows to reduce the load on the main server.
Mobile Server	Optional	1	A PC connected by ApeosWare MS Mobile application which transfers requests sent from the application to the main server. Set up when accessing ApeosWare Management Suite through the Internet (external network) using mobile devices. Set up a mobile server in a separate location from both an internal network and the Internet by firewall.
Image Log Core Server	Optional	1	It is the PC in which the core service for Image Log Management Option is installed. It executes registration and monitoring of Image Log. It can reduce the load of the main server by separating the Image Log Core Server from the main server.
Image Log Receiving Server	Optional	Up to 8 units (up to 4 units when OCR is not used)	It is the PC in which the receiving service of the Image Log Management Option and the OCR are installed. It executes receiving and extraction of image logs. It can reduce the load of the main server by separating the Image Log Receiving Server from the main server.
Image Log Server	Optional	1	It is the PC in which the core service and the receiving service of the Image Log Management Option and the OCR are installed. It executes receiving, extraction, registration and monitoring of Image Log. It can reduce the load of the main server by separating the Image Log Server from the main server.

### Entry Edition

The separation of the database server, print application server and print input/output server is supported.

ApeosWare Management Suite Server



\*1 Either the print application server or the print input/output server.  
Different printer servers cannot coexist in the same system.

Server	Required/ Optional	Number of Deployable Devices	Descriptions
Main Server	Required	1	A PC to which ApeosWare Management Suite is installed
Database Server	Optional	1	A database PC to which SQL Server is installed. Separating the database server from the main server allows to distribute the load.

# Preparation

This section describes things to prepare before setting up.

## Checking the PC environment

### Preparing the number of PCs required

Prepare a PC to install ApeosWare Management Suite software. The number of PCs required varies depending on the server configuration. All-in-One Configuration is required one PC, and Distributed Configuration is required two and more PCs.

### Checking Hardware and OS

Make sure that the hardware and PCs satisfy the requirements.



Refer

For the latest operating environment, please visit our official website.

### Checking Networks

Make sure that the network of the PC satisfies the requirements. Make sure that a static IP address is set.

Dynamic IP Address may not enable ApeosWare Management Suite to operate.



Refer

"Network" (P.8)

### Synchronizing clocks in the environment

Synchronize the server, the client and the device clocks.

### How to install the software with a remote desktop

One of the following is required to install the software with a remote desktop.

- Make the DVD drive of the PC, the original location to be connected, available to share and allot it to the network drive on the PC, the destination connected.
- Make the DVD drive of the PC, the original location to be connected, available to share and allot it to the network drive on the PC, the destination connected. After that, copy all the contents of the DVD-ROM included in the product package of ApeosWare Management Suite set to the DVD drive, to the hard disc of the PC to be the destination.

### When installing Flow Management Option

When installing Flow Management Option, note the following points.

- Do not insert and remove USB memory and other removable media during installation or uninstallation. Operation may be completed with error.
- The Flow Management Option cannot be installed if the host name of the PC to be installed meets any of the following conditions:
  - When characters other than alphanumeric characters and hyphen (-) are used
  - When hyphen (-) is used at the top or end of a string
  - When a string contains more than 256 characters

- Flow Management Option does not operate correctly unless the NETWORK SERVICE account has access permission to the installation folder of Flow Management Option, user data storage folder, folders specified by the [Folders] function of Inbound Channel and by the [Save to Folder] function of the distribution destination, and root directory of these folders.

Give full control access permission to the NETWORK SERVICE account for these folders and their subfolders and do not change the setting.

- {Installation folder}\FM
- {Destination to save user data}\Data\FM
- Folder specified by the [Folders] function of Inbound Channel
- Folder specified by the [Save to Folder] function of the distribution destination

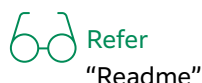
Give read and execute permission to the NETWORK SERVICE account or Users Group account for all the upstream folder hierarchies including the root directory of these folders.

When a folder is shared, the [NETWORK SERVICE] account may be deleted unintendedly. When setting a shared folder, make sure to confirm that access of the NETWORK SERVICE account is permitted.

## Setting Devices

### Confirming Target Devices

Confirm whether the device to be used is supported by ApeosWare Management Suite or not.




### Settings required for the Device



The device to be used in ApeosWare Management Suite is required to be set as below.



Depending on the model, menu construction and the name may vary. For details, refer to the manual of your device.

Items	Notes
Activate SOAP Port	
Activate SNMP Port	
Activate WSD Port	To search a device by WSD  <b>Note</b> WSD stands for Web Services on Devices.
Activate WebDAV Port	To use the box feature of Flow Management Option
Activate Salutation Port	To use the box feature of Flow Management Option
Activate LPD Port	To use the box feature of Flow Management Option To use the features of Print Management
<ul style="list-style-type: none"> <li>Activate "Embedded Plugin Feature" of expanded features</li> <li>Activate "Embedded Plugin Feature" of the plugin/custom service settings</li> </ul>	To use custom authentication



Items	Notes
Activation of [Custom Service] of the plugin/ custom service settings* <sup>1</sup>	To use custom authentication or custom service   <b>Note</b> In the case of a model whose custom service is standard installation, there is limitation on the function requiring the external access kit.
Any of the followings is required depending on the model. • Activation of the external access kit • Activation of the customized extension kit	To use custom authentication or custom service   <b>Note</b> Depending on the model, there is a model requiring the external access kit.
Filtering IP address	Set the ApeosWare Management Suite server and the client so as not to be restricted.
Add LPD	

\*1 For Fuji Xerox devices, deactivation of [Signature Verification] of the plugin/custom service settings is also required.



ApeosWare Management Suite may not work correctly if a dynamic IP address is set to the device.



Refer

Guides for Devices

## If ApeosWare Management Suite Server Is Changed to SSL



- It is recommended to encrypt communication with ApeosWare Management Suite server before management.  
In the case of linking with OneDrive and Salesforce, the communication must be encrypted.
- Depending on from where the server certificate is obtained, you may need to install the CA certificate to the web client or perform other actions. Inquire the server certificate provider for the necessary work steps.

1. Create a website using Internet Information Service.
2. Get the server certificate from CA (Certification Authority)
3. Import the server certificate retrieved on the server certificate screen in the Internet Information Service management tool.
4. Add the website with any name and any physical path.  
Select https in Bind settings, and select the server certificate retrieved on the field of the SSL certificate.



When converting the communication for transmitting the Image Log from the device to one of the following servers into SSL, set a digital certificate for the server of the transfer destination on the device:

- Main Server for which Image Log Management Option is installed
- Image Log Server
- Image Log Receiving Server

For how to set a digital certificate on the device, refer to the manual of your device.



### Refer

In installing ApeosWare Management Suite, select the website created on [Choose a Website], and then check [Enable SSL Configuration].

- "Install ApeosWare Management Suite by Performing the Following Steps." (P.26)
- "Set up the Main Server" (P.42)
- "Install ApeosWare Management Suite to the OCR server." (P.47)
- "Setting Up the Flow Server" (P.48)
- "Install Image Log Server." (P.49)

## Required Additional Software and Files for Use of the Flow Management Option

- For the server to install Flow Management Option, the installation of the software or the preparation of the files are required as following.
  - To convert documents to DocuWorks format, or to process by OCR:  
Install DocuWorks 8.0 or later.
  - To import documents from the folder of the device that does not support WebDAV:  
Install Network Scanner Utility 2 Ver.5.9.4 or later.
  - When you use the flow that was created by Flow Management on another PC:  
Copy the shared system ID file from the PC where the flow was created to the PC where to install the software. For the procedure of downloading Shared System ID with the PC that created the flow, refer to "Configuring the Flow Usage Environment" in the "Features Guide Flow Management Option".
- Flow Management Option uses features of DocuWorks. For this reason, when you install or update DocuWorks, you should note the following points:
 

<When installing DocuWorks>

When installing DocuWorks after installing Flow Management Option, it is necessary to restart the computer or manually restart the processing service. If the computer or processing service is not restarted, a flow including OCR processing cannot be executed.  
In this case, the log shown below is output.

"The flow [<flow name>] cannot be used because it contains processing of a nonexistent function."

When a flow that specifies DocuWorks for format conversion is processed, no error is output, but the format is not converted into DocuWorks and the document is output in its format.  
For how to restart ApeosWare Management Suite Flow Management service manually, refer to "Features Guide Flow Management Option."
- Flow Management Option needs Network Scanner Utility 2 to import data from folders of some multifunction devices.
 

When you install or update Network Scanner Utility 2, you should note the following points:

<When installing Network Scanner Utility 2>

When installing Network Scanner Utility 2 after installing Flow Management Option, it is necessary to restart the computer or manually restart the ApeosWare Management Suite Flow Management service.

If the computer or ApeosWare Management Suite Flow Management service is not restarted, a flow that includes folders in Inbound Channel cannot be processed.  
For how to restart ApeosWare Management Suite Flow Management service manually, refer to "Flow Management Option."
- Flow Management Option cannot be used with any of the following products that conflict with the Salutation protocol on a same computer.
 

To use these products, the ApeosWare Management Suite Flow Management service needs to be stopped.

  - Confidential folder viewer

- Network Scanner Utility 2

## About List File of Serial Numbers

Serial numbers of ApeosWare Management Suite can be set by importing them from the list file. Using the list file enables you to enter multiple serial numbers at a time.

The list file is created as a text file on which multiple serial numbers are separated by line feed codes (CRLF). Each serial number has "-" (hyphen) as following.

1111-2222-3333-4444-5555-6666

2222-3333-4444-5555-6666-7777

3333-4444-5555-6666-7777-8888

## About Installation when Using Antivirus Software

When installing ApeosWare Management Suite in the environment in which antivirus software is used, stop the functions of the antivirus software before installing it. After installation is finished, exclude it from the virus scan targets.

The installation and setting procedures are shown below.

1. Stop the functions of the antivirus software.
2. Install ApeosWare Management Suite.
3. Resume the functions of the antivirus software.
4. Exclude the following folders from the virus scan targets.  
The folder paths shown below are the default settings.

■ Installation folder

- C:\Program Files (x86)\FUJIFILM\ApeosWare MS
- C:\Program Files\FUJIFILM\ApeosWare MS

■ Folder of data storage directory

C:\FUJIFILM\ApeosWare MS\Data

■ Folder of data storage directory (compatible with the previous version)

- C:\Fuji Xerox\ApeosWare MS 2\Data
- C:\Fuji Xerox\ApeosWare\_MS\Data

■ SQL physical file folder (for Flow Management Option)

● In the case of all-in-one configuration

- When using SQL Server 2012  
{SQL Server Installation destination}\MSSQL11.FXAW\MSSQL\DATA  
Example: C:\Program Files (x86)\Microsoft SQL Server\MSSQL11.FXAW\MSSQL\DATA
- When using SQL Server 2014  
{SQL Server Installation destination}\MSSQL12.FXAW\MSSQL\DATA  
Example: C:\Program Files (x86)\Microsoft SQL Server\MSSQL12.FXAW\MSSQL\DATA
- When using SQL Server 2016  
{SQL Server Installation destination}\MSSQL13.FXAW\MSSQL\DATA  
Example: C:\Program Files\Microsoft SQL Server\MSSQL13.FXAW\MSSQL\DATA
- When using SQL Server 2019  
{SQL Server Installation destination}\MSSQL15.FXAW\MSSQL\DATA

Example: C:\Program Files\Microsoft SQL Server\MSSQL15.FXAW\MSSQL\DATA



**Note**

When installing 64-bit SQL Server to 64-bit OS, "(x86)" is not included in the "Program Files" folder name.

● In the case of distributed configuration

{Flow Management Option Installation destination}\db

Example: C:\Program Files (x86)\FUJIFILM\ApeosWare MS\db

■ Shared folder between Flow Management Option and Scan Settings

■ SQL Server temporary database

• When using SQL Server 2012

C:\Program Files (x86)\Microsoft SQL Server\MSSQL11.FXAW\MSSQL\DATA

• When using SQL Server 2014

C:\Program Files (x86)\Microsoft SQL Server\MSSQL12.FXAW\MSSQL\DATA

• When using SQL Server 2016

C:\Program Files\Microsoft SQL Server\MSSQL13.FXAW\MSSQL\DATA

• When using SQL Server 2019

C:\Program Files\Microsoft SQL Server\MSSQL15.FXAW\MSSQL\DATA



**Note**

In the case of SQL Server 2016 and SQL Server 2019, "(x86)" is not included in the "Program Files" folder name.

■ ASP.NET

- C:\Windows\Microsoft.NET\Framework\v4.0.30319\Temporary ASP.NET Files
- C:\Windows\Microsoft.NET\Framework64\v4.0.30319\Temporary ASP.NET Files



**Note**

When security software such as antivirus software is used, add the following URL to the exception settings of security software.

- http://{Host Name}:{Port to be set upon installation}/
- https://{Host Name}:{Port to be set upon installation}/
- http://{Host Name}:8181/
- https://{Host Name}:8183/

## About Installation of IIS (Internet Information Services)

IIS is automatically installed during the installation of .Net Framework, if it was not installed.

If the auto installation of IIS failed and you install it manually, note the followings to operate.

### Windows 8.1 or Windows 10

1. Click Control Panel > Programs and Features > Turn Windows features on or off to open the screen of the Windows.
2. Select "Internet Information Services" and check that check marks are attached to all of the following parent components and child components.

■ Windows Process Activation Service

- NET Environment
- Process Model

- Configuration API

## ■ Internet Information Services

- Web Administration Tool
  - IIS 6 Management Compatibility
    - IIS 6 WMI Compatibility
    - IIS 6 Scripting Tools
    - IIS 6 Management Console
    - IIS Metabase and IIS 6 configuration compatibility
  - IIS Management Console

## ■ The World Wide Web service

- Common HTTP Features
  - HTTP Error
  - Browse Directory
  - Default Document
  - Static Content
- Application Development
  - .NET Extensibility
  - ASP.NET
  - ISAPI Filters
  - ISAPI Extensions
- Security
  - Request Filtering
- Performance Feature
  - Static Content Compression
- Status and Diagnosis
  - HTTP Logging
  - Request Monitor

3. If there is a function whose check mark is removed, install the function and install ApeosWare Management Suite again.

- Some function names and operation procedures may vary depending on the OS.
- As for a valid component with IIS installed, do not remove the check mark. If the check mark is removed, a defect may occur.



### Note

By the setting of application pool for ApeosWare Management Suite, [Enable 32-Bit Applications] needs to be set to [False] (default value). When set to [True], ApeosWare Management Suite will not operate.

## Windows Server 2012, Windows Server 2012 R2, Windows Server 2016, and Windows Server 2019

1. Open the server role select screen by the Add Role and Function wizard in Server Manager.

2. Select the “Web server (IIS)” and check that check marks are attached to all of the following parent components and child components.

## ■ Web server

- Common HTTP Features
  - HTTP Error
  - Browse Directory

- Default Document
- Static Content
- Security
  - Request filter
  - Windows authentication



“Windows authentication” is required to install “Paper Form Management”.

- Performance
  - Static Content Compression
- Status and Diagnosis
  - HTTP Logging
  - Request Monitor
- Application Development
  - .NET Extensibility
  - ASP.NET
  - ISAPI Filters
  - ISAPI Extensions

#### ■ Administration Tool

- IIS 6 Management Compatibility
  - IIS Metabase Compatibility
  - IIS 6 WMI Compatibility
  - IIS 6 Scripting Tools
  - IIS 6 Management Console

3. Next, open the feature select screen.

4. Select the “Web process activation service” and check that check marks are attached to all of the following components.

- NET Environment
- Process Model
- Configuration API

5. If there is a function whose check mark is removed, install the function and install ApeosWare Management Suite again.

- Some function names and operation procedures may vary depending on the OS.
- As for a valid component with IIS installed, do not remove the check mark. If the check mark is removed, a defect may occur.



By the setting of application pool for ApeosWare Management Suite, [Enable 32-Bit Applications] needs to be set to [False] (default value). When set to [True], ApeosWare Management Suite will not operate.

## SQL Server

### Servers that require SQL Server

For the following servers, you need to install SQL Server.

#### For All-in-One Configuration/Multiplexing Server Configuration

- Main Server

## For Distributed Configuration

- Main Server
- Report Server
- Print Application Server
- Flow Server

When separating the database, SQL Server is required to be installed on the database server.

## Install SQL Server

SQL Server 2019 is included in the product package of ApeosWare Management Suite and installed automatically when ApeosWare Management Suite is installed. After the automatic installation, the instance named "FXAW" is created.

When ApeosWare Management Suite 2 SQL Server Standard Media Set (E) is purchased, SQL Server can be installed from the media.

If there is SQL Server already installed, it can be used with no change.



### Note

- If the SQL Server is not installed from the DVD-ROM, the change of the setting of the SQL Server Browser service may be required.  
Set [Type of Startup] of the service to [Automatic] from the management tool of the Windows to start it.  
The display name and service name are as shown in the following.  
- Display name: SQL Server Browser  
- Service Name: SQLBrowse
- An installation of SQL Server 2019 by directly running Setup.exe contained in the media is not available.

The procedure to install SQL Server in the media as shown below.

## When installing SQL Server 2019 manually

Install by the following procedure.

1. Insert the DVD-ROM into the DVD drive.
2. When the window to select language appears, select the language to use and click [OK].  
When the window is not displayed, double-click "Launcher.exe" on the root of DVD-ROM.
3. Double-click [Microsoft SQL Server 2019] on the displayed window.
4. On and after, follow the instruction on the screen and the settings in the following table to install.

Items	Setting Content
Feature Selection	Select [Database Engine Services]
Instance Name	Any name can be set. ("FXAW" is recommended.)
Authentication Mode	Specify [Mixed Mode (SQL Server authentication and Windows authentication)].
SQL Server Administrator	Specify [Administrators].

5. After the installation is complete, reboot the PC.



### Note

- When SQL Server 2019 Express is manually installed, make sure to reboot the PC. Otherwise ApeosWare Management Suite cannot be installed.
- The default installation drive is the C drive. You can change the installation drive from the default.

When you purchased ApeosWare Management Suite 2 SQL Server Standard Media Set  
Install by the following procedure.

1. Insert the DVD-ROM into the DVD drive.
2. When the window to select language appears, select the language to use and click [OK].  
When the window is not displayed, double-click "Launcher.exe" on the root of DVD-ROM.
3. Double-click [Microsoft SQL Server 2019 Express] or [Microsoft SQL Server 2019 Standard] on the displayed window.
4. After that, follow the instruction on the screen and "When installing SQL Server 2019 manually" (P.23) to install.
5. After the installation is complete, reboot the PC.



Note

- When ApeosWare Management Suite 2 SQL Server Standard Media Set is used for the installation, make sure to reboot the PC. Otherwise ApeosWare Management Suite cannot be installed.
- The default installation drive is the C drive. You can change the installation drive from the default.

### Set Port Used by SQL Server

Set a port used by the SQL Server in the following operation.



Note

- The port number of SQL Server used by ApeosWare Management Suite and the port number of SQL Server used by another existing application are conflicting with each other, another existing application does not operate normally. Perform the setting so that the port number that does not conflict with that of another application is used.
- The procedure shown below is an operation example in the case of Windows Server 2019. Operate it based on the versions of the OS and SQL Server used.

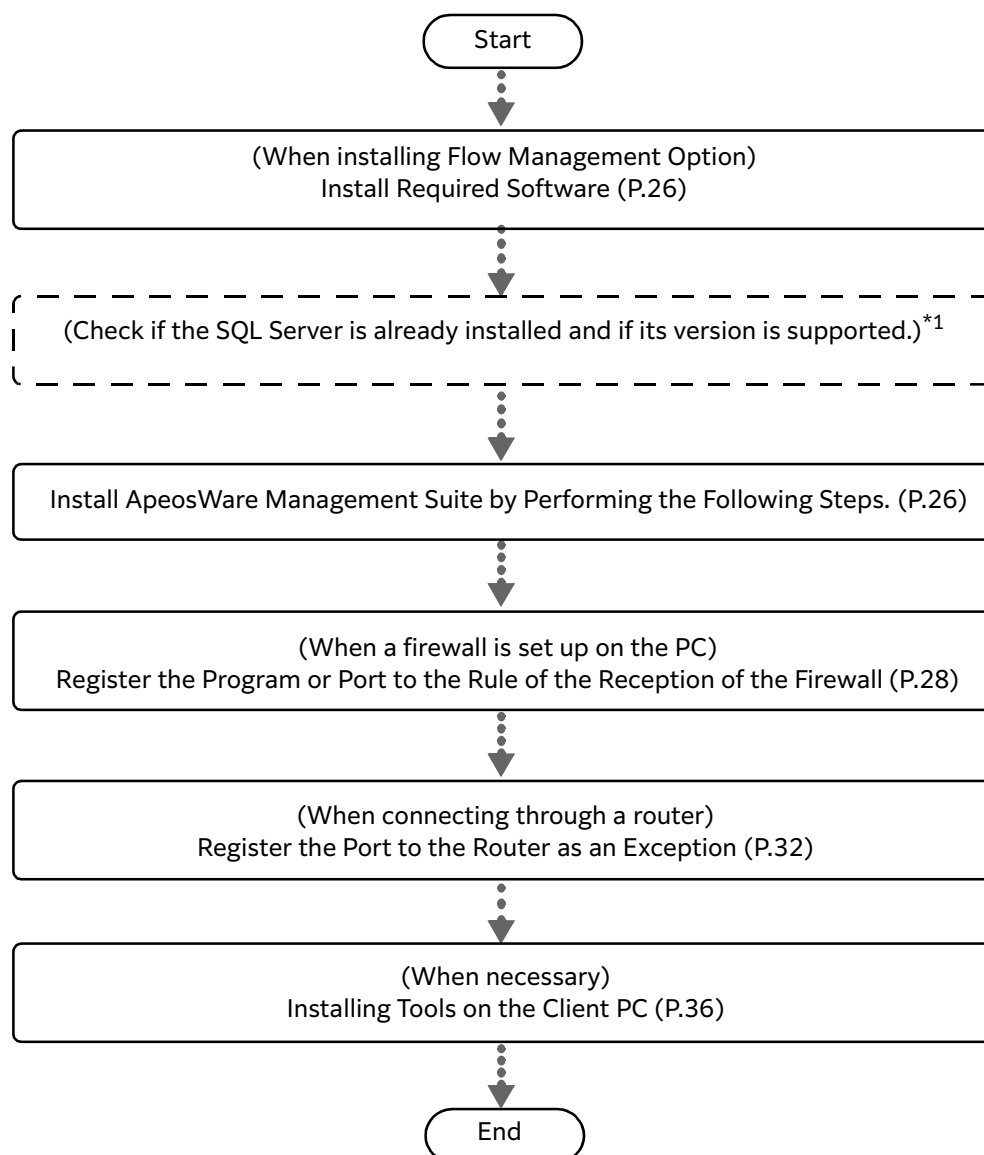
1. Select [Start] > [Microsoft SQL Server 2019] > [SQL Server 2019 Configuration Manager].
2. Perform the following steps.  
As an example, an operation is shown in a case where the SQL Server instance used in ApeosWare Management Suite is "FXAW" and the port number is "1433".
  - (1) Select the protocol of the SQL Server instance name used in ApeosWare Management Suite under [SQL Server Network Configuration] in the left pane (tree pane).  
Example [Protocol of FXAW]
  - (2) Right-click [TCP/IP] in the right pane and select [Activated].
  - (3) Double-click [TCP/IP].
  - (4) Click the [IP Address] tab.
  - (5) Enter "1433" into all [TCP ports] from [IP1] to [IP All] and set [Valid] to [Yes].
  - (6) Click [OK].
  - (7) Right-click the SQL Server used in ApeosWare Management Suite in [SQL Server Services] and select [Reboot].  
Example SQL Server (FXAW)
3. If ApeosWare Management Suite has already been installed, refer to the specification procedure for the -DN option in "Change of Server Information" of Installation and Operation Guide to change the



port number of the database.

## All-in-One Configuration Setup

### Flowchart of Setup



\*1 If you already have the SQL Server in use, you can keep using it. For the latest operating environment, please visit our official website.



#### Note

Do not specify "c:\Program Files\" as the installation path when installing Flow Management Option, Paper Form Editor, and Paper Form Management. Flow Management Option, Paper Form Editor, and Paper Form Management operate on the WOW64 emulation layer subsystem, and thus an unexpected problem may occur.

## Install Required Software

When installing Flow Management Option, install or copy necessary software (DocuWorks, Network Scanner Utility 2) and files on the PC in advance.

For details, refer to “Required Additional Software and Files for Use of the Flow Management Option” (P.18).

## How to Install SQL Server 2019 Standard on Server

When you use SQL Server 2019 Standard, install it on the PC.

For information about the installation procedure and the required settings, refer to “Install SQL Server” (P.23).



Note

- If you already have the SQL Server in use, you can keep using it.
- When using SQL Server 2019 Express, these steps are not necessary.

## Install ApeosWare Management Suite by Performing the Following Steps.

Install ApeosWare Management Suite to the server. The following two methods are available.

- How to be installed from DVD-ROM (P.26)
- How to Install Software from File Downloaded (Only Entry Edition) (P.28)

### How to be installed from DVD-ROM

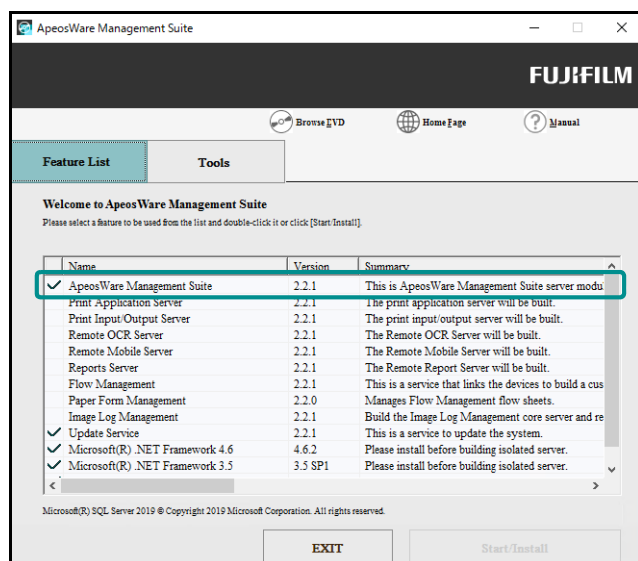
#### 1. Install ApeosWare Management Suite by performing the following steps.

(1) Insert the DVD-ROM into the DVD drive.

(2) When the window to select language appears, select the language to use and click [OK].

When the window is not displayed, double-click “Launcher.exe” on the root of DVD-ROM.

(3) Double-click [ApeosWare Management Suite] on the displayed window.



(4) After that, follow the instruction on the screen and below descriptions to install.

- Enter the serial number of ApeosWare Management Suite on the [Enter Serial Number] screen. The serial number is written in the “License Certificate” packed in the product package of

ApeosWare Management Suite.

- If you enter the serial number of trial edition, the trial edition will be installed.  
You can import the file of the serial number list. Refer to “About List File of Serial Numbers” (P.19).
- To use cost management functionality in the Enterprise Edition, display the [Setup Type] screen and then select the [Enable Cost Recovery Feature] check box.
- The [IIS Website Settings] screen is used to set the Internet Information Service website.  
When executing “If ApeosWare Management Suite Server Is Changed to SSL” (P.17) select [Select and use the existing website from IIS] and specify the previously created website. Attach a check mark to [Enable SSL Configuration] for [Binding Settings].
- Specify the database to use on the [SQL Server Information] screen.
  - When installing SQL Server 2019 included in the installer  
Select [Newly Install SQL Server 2019].
  - When SQL Server is already installed  
Select [Use existing SQL Server], click [Browse], and then select the desired database instance.  
When [SQL Server Authentication] is selected as the authentication method, specify also the user name used to connect to SQL Server and its password.
- On the [Confirm Installation Information] screen, specify the installation destination and data storage destination of the software.
- On the [Temporary Folder Settings] screen, specify a temporary folder used for data delivery with a device.
- If License Activator (a tool to activate license) starts during the installation, refer to “Activating the License via the Internet” (P.57).

## 2. When installing Flow Management Option, perform the following steps.

- (1) Double-click [Flow Management] on the [Features List] tab.
- (2) After that, follow the instruction on the screen and below descriptions to install.
  - On the [Enter Serial Number] screen, enter the serial number written on the “license certificate”.  
When installing as trial edition, click [Next] without entering anything.
  - Select [General Configuration] on the [Specify Setup Type] screen.
  - When [Specify Shared System ID] is displayed, perform the following steps.
    - When you do not use the flow that was created by Flow Management on another PC:  
(1) Select [Not Specify Shared System ID].
    - When you use the flow that was created by Flow Management on another PC:  
(1) Select [Specify Shared System ID].  
(2) Click [Browse] and select Shared System ID File.  
The default name of the shared system ID file is  
“AWFMSYSTEMIDDownload\_{YearMonthDateHourMinuteSecond}.ini”.
  - If License Activator (a tool to activate license) starts during the installation, refer to “Activating the License via the Internet” (P.57).



### Note

- The following options can be installed when an applicable language is selected with the DVD-ROM included in the product package of ApeosWare Management Suite.
- OCR for DocuWorks Multi Language Option (supported by languages other than English and Japanese)
- OCR for DocuWorks English License
- OCR for DocuWorks Japanese Option
- The following options can be installed when an applicable language is selected in the system locale of Windows.
- Attribute Processing Option
- Database Query Option

- OmniPage Barcode Reader Option
- Scan OCR Option

### 3. To install Image Log Management, execute the following procedure.

(1) Double-click [Image Log Management] in the [Features List] tab.

(2) Then follow the instructions on the screen and explanation given below.

- Enter the following serial number in the "license certificate" in the [Enter Serial Number] screen.
  - ILM core server license  
ApeosWare Management Suite 2 Image Log Management Option Registering Server License (MSDS)
  - ILM receiving server license  
ApeosWare Management Suite 2 Image Log Management Option Receiving Server License (MSDT)
  - ABBYY OCR license  
ApeosWare Management Suite 2 Image Log Management Option OCR License (MSDU) or ApeosWare Management Suite 2 Image Log Management Option OCR CJKE Thai License (MSDV)



#### Note

- When using the OCR feature, either the ABBYY OCR license or OmniPage OCR license is required.
- When using ABBYY OCR, the ABBYY OCR license is required. When using OmniPage OCR in the all-in-one configuration, the Scan OCR Option license is not required.
- In the [Specify Setup Type] screen, select [Install on main server].
- When the [IIS Web site settings] screen is displayed, set up the Web site of Internet Information Service.  
When executing "If ApeosWare Management Suite Server Is Changed to SSL" (P.17), select [Select and use specified Web site from IIS] and specify the Web site that is created in advance. Select the checkbox of [Use SSL configuration] in [Bind Settings].

### 4. When the installation is complete, double-click Update Service on the [Features List] tab.

As the installer starts, install Update Service following the instructions on the screen.

### 5. Install other software on the [Features List] tab as necessary.



#### Note

After that, if you install DocuWorks or Network Scanner Utility 2 after creating the flow, reboot the PC or Flow Management service after installation. Otherwise, the flow works incorrectly.

## How to Install Software from File Downloaded (Only Entry Edition)

### 1. Unzip the zipped file of ApeosWare Management Suite downloaded.

### 2. Double-click "AWMS.exe".

### 3. After that, follow the instruction on the screen.



#### Refer

Step 1 (4) in "How to be installed from DVD-ROM" (P.26)

## Register the Program or Port to the Rule of the Reception of the Firewall

You may be required to change the settings if a firewall is set to the PC which ApeosWare Management Suite is installed to.

Register the following programs and ports as programs for permitting the connection in the rule of the reception of the firewall. For detailed procedures, refer to the website of Microsoft.

As for the rule of sending, do not change the predetermined operation and do not impose a limitation.



#### Note

Depending on the server configuration or optional settings, some programs are not installed on the server. Register the installed programs as programs for permitting the connection in the rule of the reception of the firewall.

### Programs for permitting connection in rule of reception of firewall

Features or Service Names	Programs <sup>*1</sup>	Requirements of Registration
SQL Server 2012	C:\Program Files\Microsoft SQL Server\MSSQL11.FXAW\MSSQL\Binn\Sqlservr.exe	-
SQL Server 2014 Express	C:\Program Files\Microsoft SQL Server\MSSQL12.FXAW\MSSQL\Binn\Sqlservr.exe	-
SQL Server 2016	C:\Program Files\Microsoft SQL Server\MSSQL13.FXAW\MSSQL\Binn\Sqlservr.exe	-
SQL Server 2019	C:\Program Files\Microsoft SQL Server\MSSQL15.FXAW <sup>*2</sup> \MSSQL\Binn\Sqlservr.exe	-
SQL Server (Browser)	C:\Program Files\Microsoft SQL Server\90\Shared\sqlbrowser.exe	-
Sharing files and printers	-	Print jobs by a Windows shared printer on the print queue in the print management
ApeosWare Management Suite Core Service	C:\Program Files\FUJIFILM\ApeosWare MS\JDK-11.0.6+10\bin\java.exe	-
ApeosWare Management Suite Multi Task Service	C:\Program Files\FUJIFILM\ApeosWare MS\WinSvc\WindowsServiceHost\FujiFilm.FB.ApeosWare.SF.Application.WindowsServiceHost.exe	-
ApeosWare Management Suite Monitoring Service	<ul style="list-style-type: none"> <li>C:\Program Files\FUJIFILM\ApeosWare MS\WinSvc\Mon\bin\MonSvc.exe</li> <li>C:\Program Files\FUJIFILM\ApeosWare MS\JDK-11.0.6+10\bin\java.exe</li> </ul>	To send an email by Monitoring Service
ApeosWare Management Suite Printer Port Service	C:\Program Files\FUJIFILM\ApeosWare MS\WinSvc\IncomingGW\awpmincominggw.exe	-
ApeosWare Management Suite Email Print Service	C:\Program Files\FUJIFILM\ApeosWare MS\WinSvc\EmailPrint\EmailPrint.exe	-

<sup>\*1</sup> When you install a program with the default settings, the program path becomes the program path in the "FUJIFILM" folder.

<sup>\*2</sup> "\MSSQL15.FXAW" is applicable when SQL Server 2019 included in the installer of ApeosWare Management Suite is automatically installed. If another SQL Server is used, it varies depending on the version of SQL Server and the instance name.

## Programs for permitting connection in rule of reception of firewall (if Flow Management Option installed)

Features or Service Names	Programs <sup>*1</sup>	Requirements of Registration
AWFM FTP Output	C:\Program Files\FUJIFILM\ApeosWare MS\FM\axis2c\bin\axis2_pipe_server.exe	[Virtual Directory (FTP)] is selected as the storing folder not used FTP passive mode in the [Save to Folder] feature in Flow Management Option.
AWFM Print/Fax Output	C:\Program Files\FUJIFILM\ApeosWare MS\FM\jre\bin\java.exe	If the print/fax output of Flow Management Option is used
Salutation Daemon	C:\WINDOWS\SysWOW64\fxsslm12.exe	Network Scanner Utility 2 used to access the device's box in the [Folder] function in Flow Management Option
SQL Server 2012	C:\Program Files\Microsoft SQL Server\MSSQL11.FXAW\MSSQL\Binn\Sqlservr.exe	-
SQL Server 2014 Express	C:\Program Files\Microsoft SQL Server\MSSQL12.FXAW\MSSQL\Binn\Sqlservr.exe	-
SQL Server 2016 Standard SQL Server 2016 Express	C:\Program Files\Microsoft SQL Server\MSSQL13.FXAW\MSSQL\Binn\Sqlservr.exe	-
SQL Server 2019 Standard SQL Server 2019 Express	C:\Program Files\Microsoft SQL Server\MSSQL15.FXAW <sup>*2</sup> \MSSQL\Binn\Sqlservr.exe	-
SQL Server (Browser)	C:\Program Files\Microsoft SQL Server\90\Shared\sqlbrowser.exe	-

\*1 When you install a program with the default settings, the program path becomes the program path in the "FUJIFILM" folder.

\*2 "\MSSQL15.FXAW" is applicable when SQL Server 2019 included in the installer of ApeosWare Management Suite is automatically installed. If another SQL Server is used, it varies depending on the version of SQL Server and the instance name.

## Program that permits connection based on the receiving rules of firewall (When Image Log Management is installed)

Feature or Service Name	Program*1	Registration Conditions
ApeosWare Management Suite Image Log Management Receive Service	C:\Program Files\FUJIFILM\ApeosWare MS\Image Log Management\awilm-services\awilm-receiver\bin\AWMSILMReceiveService.exe	-
ApeosWare Management Suite Image Log Management Core Service	C:\Program Files\FUJIFILM\ApeosWare MS\Image Log Management\awilm-services\awilm-core\bin\AWMSILMCoreService.exe	-
ApeosWare Management Suite Image Log Management Search Service	C:\Program Files\FUJIFILM\ApeosWare MS\Image Log Management\awilm-services\awilm-search\bin\AWMSILMSearchService.exe	-
Monitoring Service	C:\Program Files\FUJIFILM\ApeosWare MS\WinSvc\Mon\bin\MonSvc.exe	When sending Monitoring Service by email

\*1 The program path in the "FUJIFILM" folder is the default setting.

## Ports for permitting connection in rule of reception of firewall

Features or Service Names	Communication Protocol	Ports	TCP/UDP
ApeosWare Management Suite Core Service	HTTP	8181	TCP
ApeosWare Management Suite Core Service	HTTPS	8183	TCP
World Wide Web Publishing Service	HTTP	80	TCP
World Wide Web Publishing Service	HTTPS	443	TCP
ApeosWare Management Suite Core Service	ICMPv4	N/A	-
World Wide Web Publishing Service	ICMPv4	N/A	-
ApeosWare Management Suite Image Log Management Search Service	HTTPS	18983	TCP



### Note

"80" and "443" are the existing port numbers. Refer to the bind information on the website specified in installing.

## Register Exceptions of Windows Firewalls

If the firewall is enabled, disable the Windows firewall or register exceptions referring to the Windows Help.

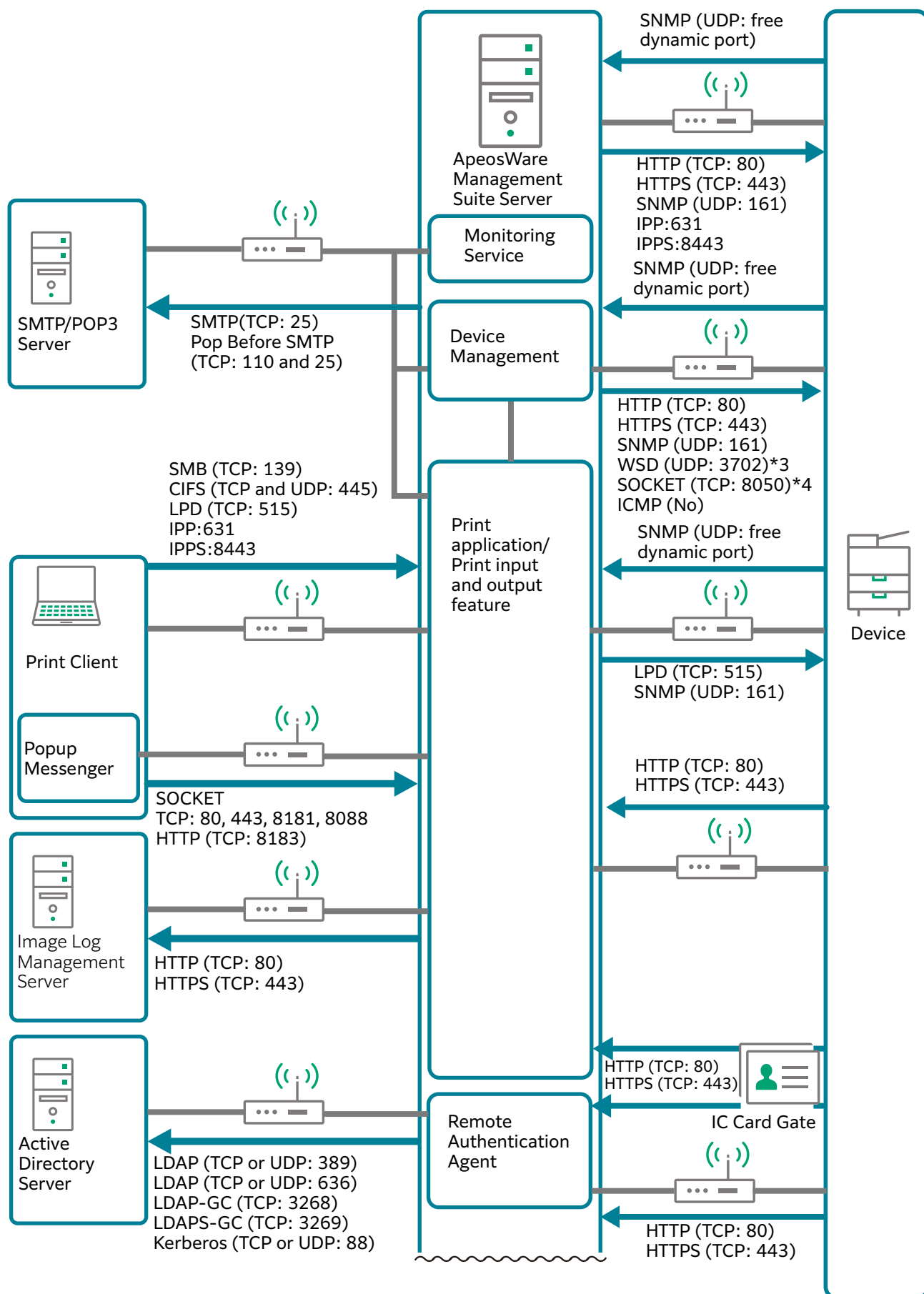
## How to Set the other Firewalls

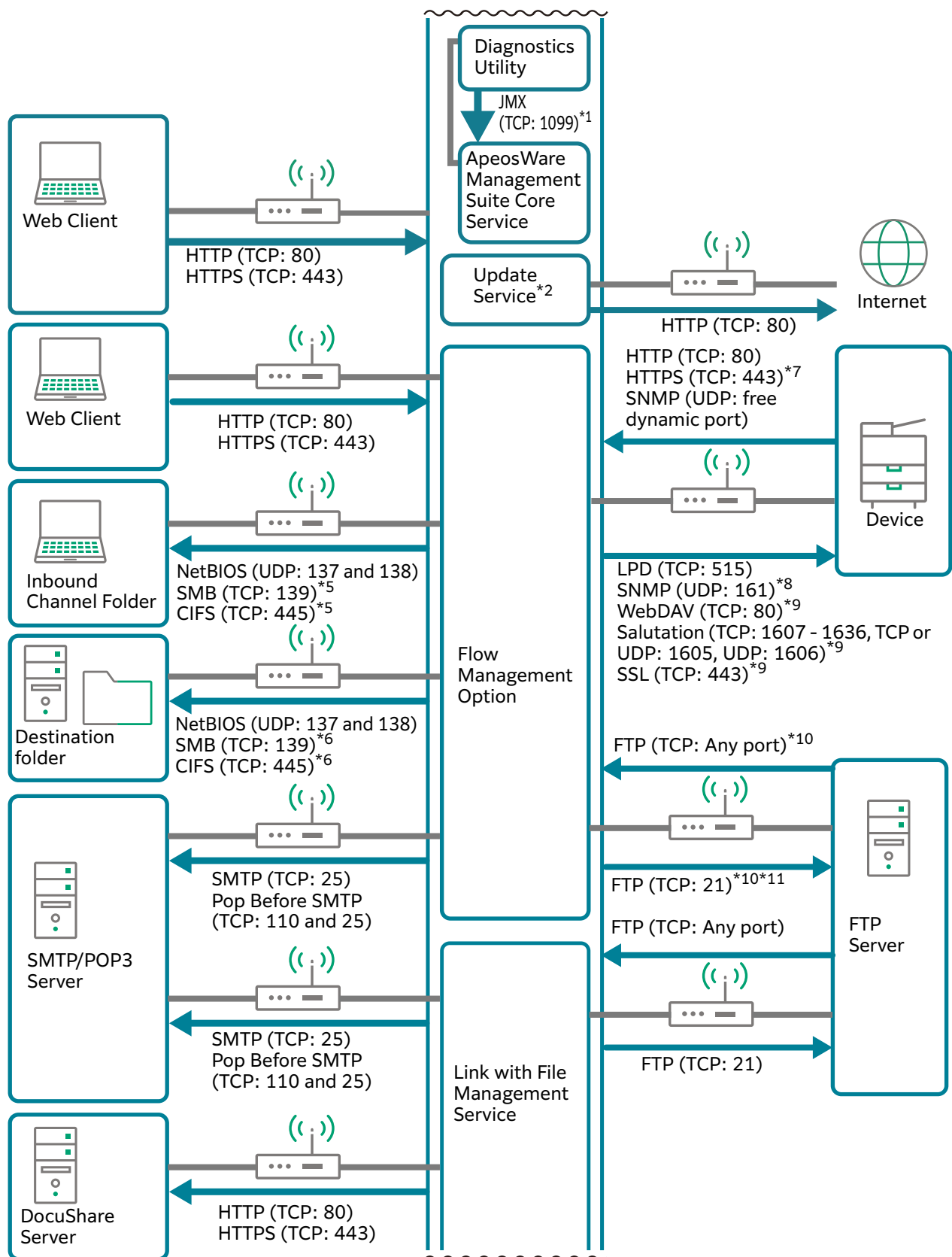
If a firewall other than Windows firewall or software such as an antivirus product having firewall functions is installed, you may be required to change those settings. "Programs for permitting connection in rule of reception of firewall" (P.29) and "Programs for permitting connection in rule of reception of firewall (if Flow Management Option installed)" (P.30) must be registered as exceptions of the firewall. Refer to the manual with the firewall or the antivirus product on how to operate.

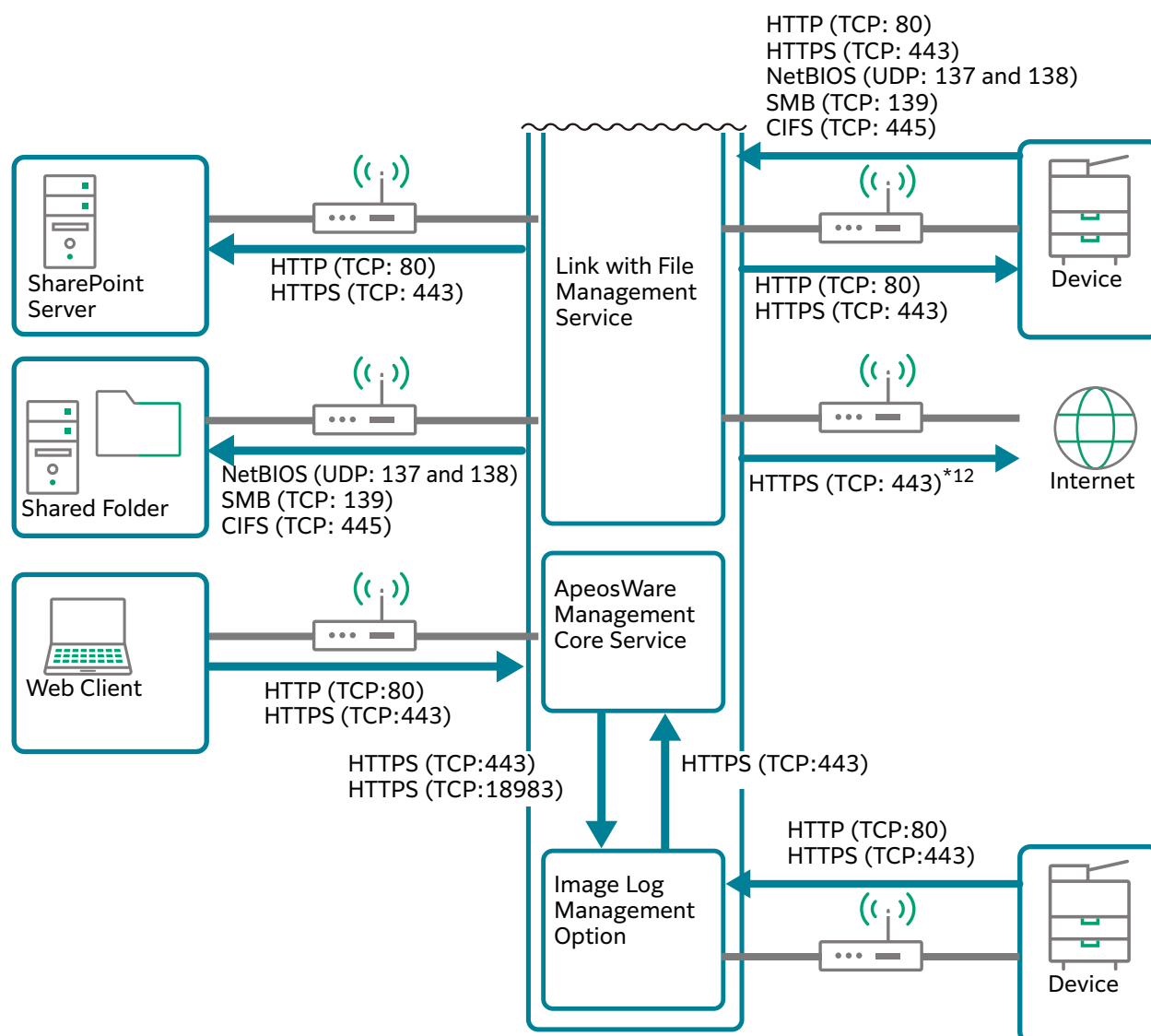
## Register the Port to the Router as an Exception

This section describes the protocols and the port numbers allowed when you connect the ports with the devices via the router from ApeosWare Management Suite server. If the port number has been changed on the external server or the device, set them to the contents changed.









- \*1 Use this when retrieving information of ApeosWare Management Suite using Diagnostics Utility. It is not necessary to register a port exception for the router since it will be used within the ApeosWare Management Suite server.
- \*2 Also applicable to installations on other servers or clients.
- \*3 To search a device by WSD. WSD stands for Web Services on Devices.
- \*4 It is required when customizing an IC card reader for authentication and/or authentication device by using an XCP plugin.
- \*5 It is required when importing the document from the common folder by using the [Folder] function.
- \*6 This is required to set when corresponding to either of the following.
  - To store the document in the common folder by using [Save to Folder] function
  - To output the CSV file of the document to the shared folder by using [Document and Attributes Table Output] function
  - To use the [Form Analysis] feature
  - To use the [Save Form Analysis to File] feature
- \*7 It is required when importing the scan document by using [Link to Web Applications] function.
- \*8 It is required when printing or faxing the documents by using [Printer Output] function.
- \*9 It is required to import documents from the box via the [Device Folder] function. Set WebDAV or Salutation depending on the device connection method. The setting differs as per the model. SSL (TCP: 443) must be set when using WebDAV with SSL encryption for device communication.
- \*10 It is required when storing the document in the folder on the FTP server by using [Save to Folder] function.
- \*11 The ports except 21 can be also set.
- \*12 It is required when using Working Folder, Salesforce, or Google Drive.

# Installing Tools on the Client PC

Install tools on the client PC as necessary. The following two methods are available.

- How to be installed from DVD-ROM (P.36)
- How to Install Software from File Downloaded (Only Entry Edition) (P.36)

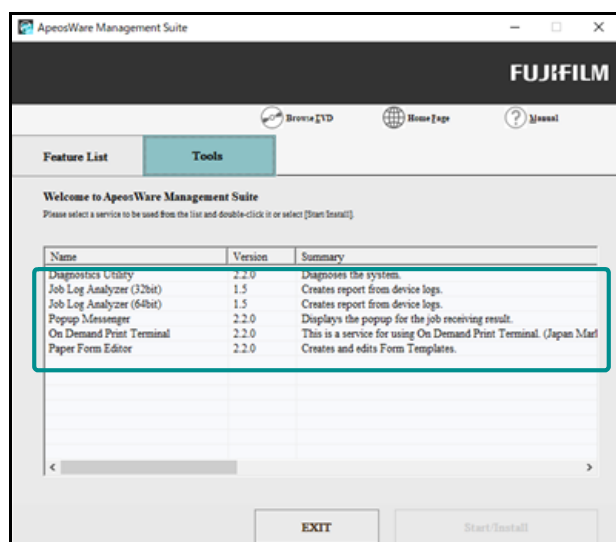


Refer

For details on the installation of Popup Messenger, refer to “Install Popup Messenger” in Features Guide.

## How to be installed from DVD-ROM

1. Insert the Edition media of the DVD-ROM into the DVD drive.
2. When the window to select language appears, select the language to use and click [OK].
3. Click the [Tool List] tab.  
When installing Update Service and Paper Form Management, click the [Features List] tab.
4. Double-click the required tools.



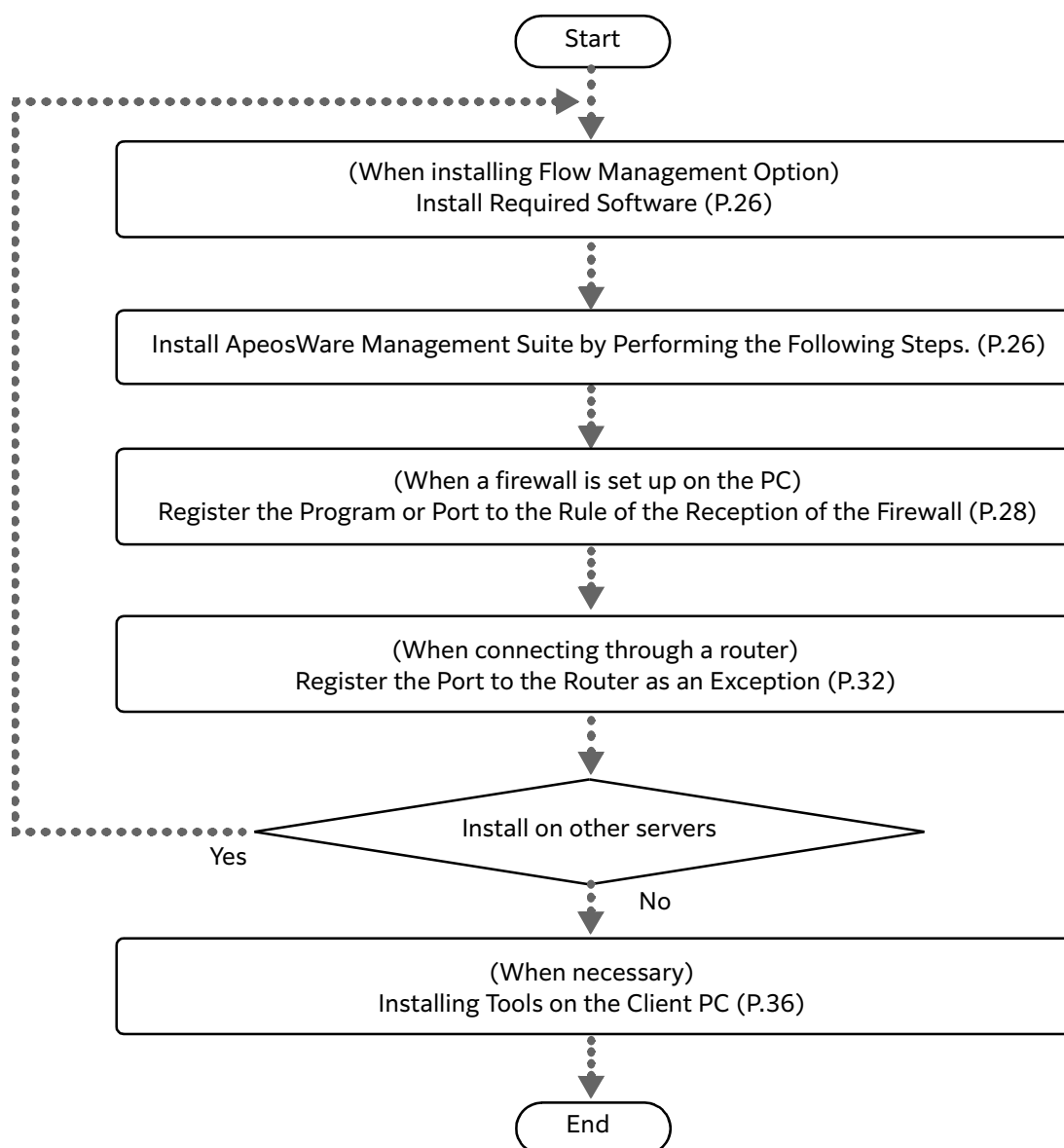
After that, follow the instruction on the screen.

## How to Install Software from File Downloaded (Only Entry Edition)

1. Unzip the zipped file of the tool downloaded.
2. Double-click “setup.exe”.  
After that, follow the instruction on the screen.

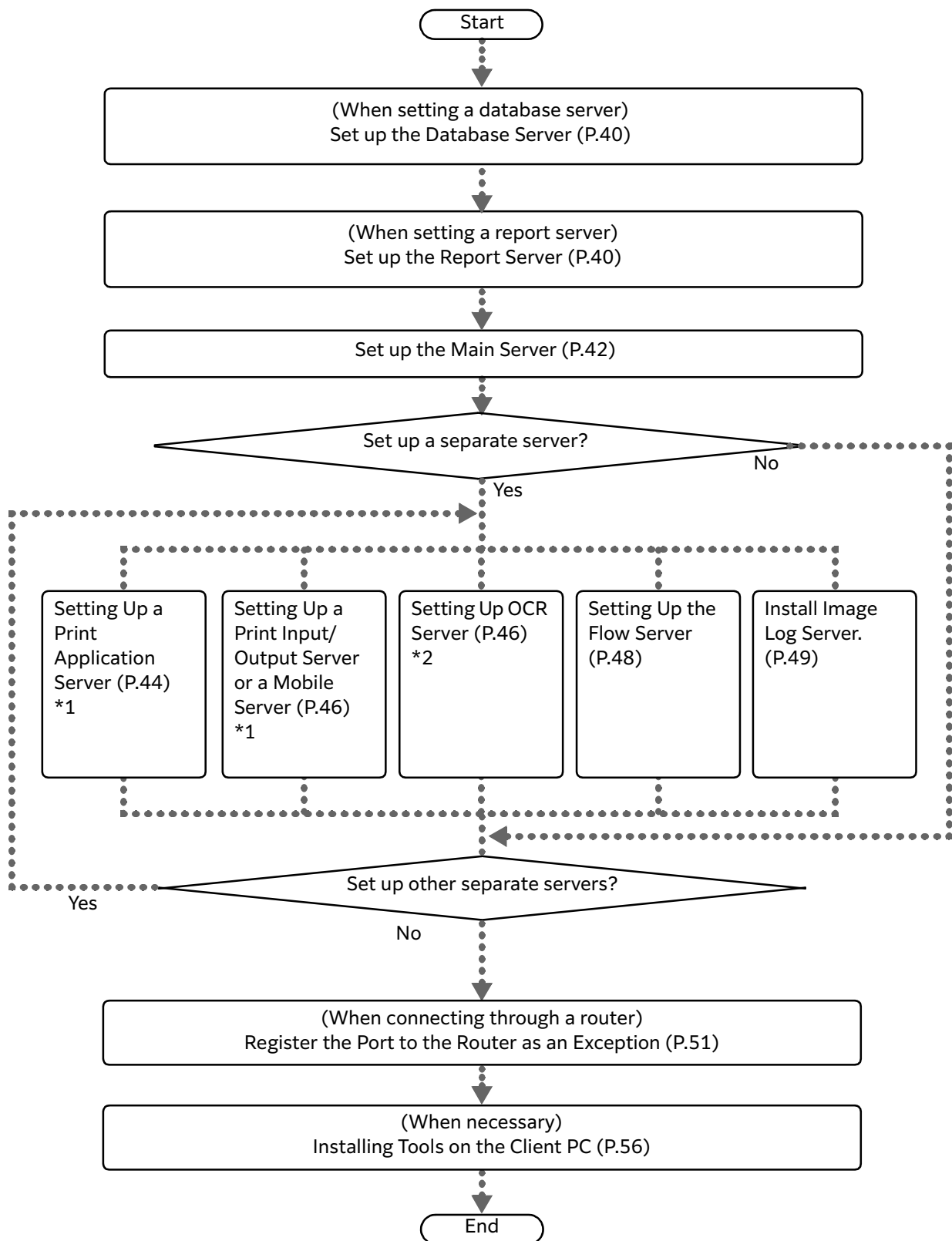
# Multiplexing Server Configuration Setup

The multiplexing server configuration is the support only of the Enterprise Edition. Follow the steps below to set up.



# Distributed Configuration Setup

## Flowchart



\*1 The print application server and the print input/output server cannot coexist.  
In addition, when the print application server is installed, the following options are not available.

Cost Recovery Option  
On Demand Print Terminal

\*2 After setting up an OCR server, OCR Config Utility is required to be run on the main server.



#### Note

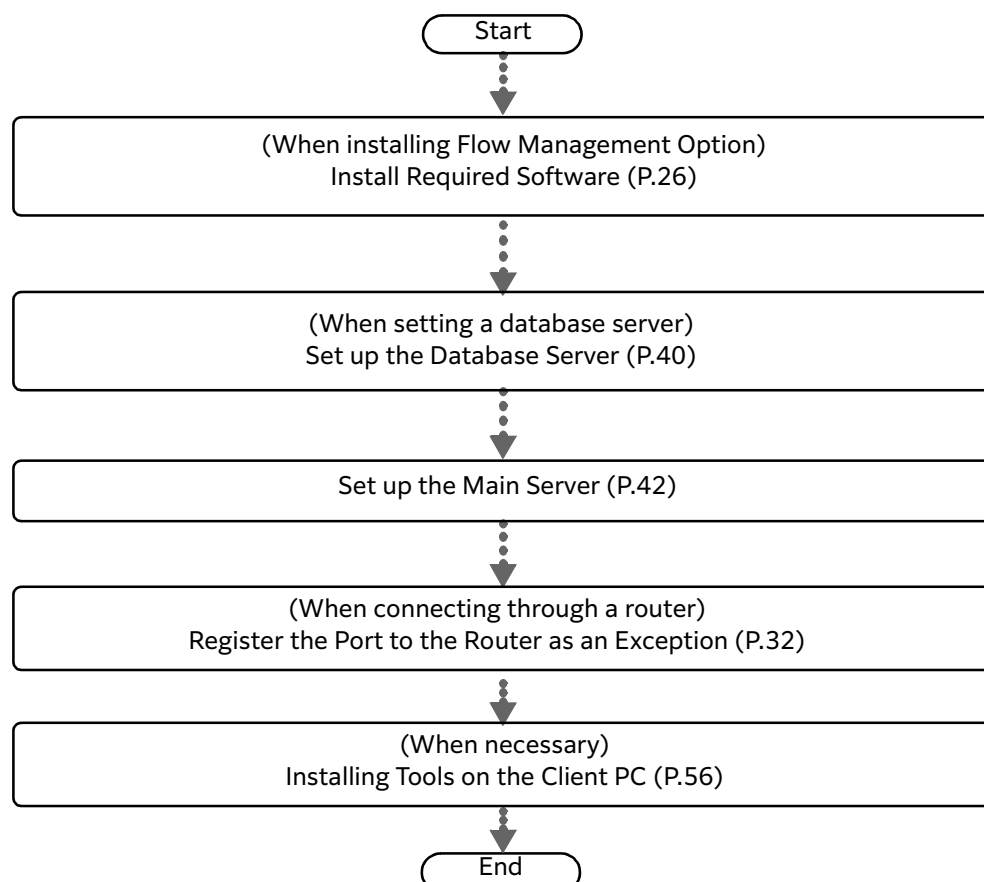
- Do not specify "c:\Program Files\" as the installation path when installing Flow Management Option, Paper Form Editor, and Paper Form Management. Flow Management Option, Paper Form Editor, and Paper Form Management operate on the WOW64 emulation layer subsystem, and thus an unexpected problem may occur.
- If there is more than 60-second difference in the time setting between the main server and each distributed server, each function does not work properly. Adjust the time on the main server and each distributed server by using NTP (Network Time Protocol) or the like.
- Do not set up several distributed servers at the same time. If set up at the same time, the distributed servers may not be set up correctly.
- When you perform setup with the separate server configuration, the main server's [Host Name] or [IP Address] specified in setting up the main server needs to match the main server's [Host Name] or [IP Address] specified in setting up the separate server.  
For example, if [Host Name] is specified in setting up the main server, and the main server is specified in [IP Address] in setting up the separate server, the servers do not work properly.  
See "When the host name or IP address is changed with the server of multiplexing configuration" in "Features Guide" and configure the servers so that the host names are the same.



#### Refer

If several distributed servers are set up at the same time, refer to "When Distributed Print Servers Are Not Displayed Correctly After Installation" (P.64).

### Entry Edition



#### Note

Do not specify "c:\Program Files\" as the installation path when installing Flow Management Option and

ApeosWare Management Suite on 64-bit edition of Windows. Using this path may cause unexpected problems because ApeosWare Management Suite runs on the WOW64 emulation layer subsystem.

## Set up the Database Server

When installing a database server, set up the PC by performing the following steps.

1. If SQL Server is not installed on the PC, install it.  
For the required settings for SQL Server, refer to “Install SQL Server” (P.23).
2. When the firewall is set on the PC, register it as an exception.  
Refer to “Register the Program or Port to the Rule of the Reception of the Firewall” (P.28) and set target programs and ports as exceptions.

## Set up the Report Server

When installing a report server, set up the PC by performing the following steps.

- (1) Install SQL Server and SSRS (SQL Server Reporting Services).
- (2) Install ApeosWare Management Suite.



### Note

- If a report server is installed, the database server is required to be separated from the main server.
- It is recommended to set up the report server on the PC that the database server is set up on.
- Report Server cannot be used in the SSL environment.

1. Install SQL Server and SSRS (SQL Server Reporting Services) on the report server.



### Note

- Make sure to install SQL Server and SSRS (SQL Server Reporting Services) on the report server.
- For installation of SSRS, download SSRS suitable for the version of SQL Server that you use from the link on at the top of the screen “Feature Selection” or the like in the Microsoft SQL Server 2019 installer.



### Refer

For the required settings for SQL Server, refer to “Install SQL Server” (P.23).

2. Install ApeosWare Management Suite by performing the following steps.
  - (1) Insert the Edition media of the DVD-ROM into the DVD drive.
  - (2) When the window to select language appears, select the language to use and click [OK].

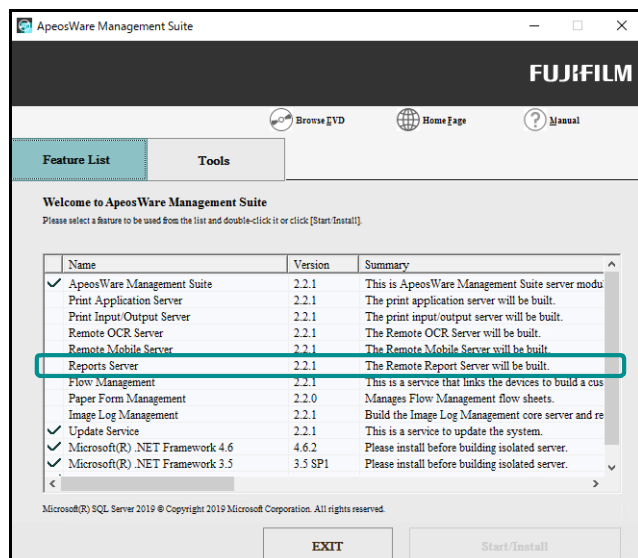


### Note

When the window is not displayed, double-click “Launcher.exe” on the root of DVD-ROM.



(3) Double-click [Reports Server] on the displayed window.



(4) After that, follow the instruction on the screen and below descriptions to install.

- On the screen to select a database, specify the database the report feature uses. Specify "localhost\{Instance name}" from the drop-down listbox. Make sure to specify a local database. When [SQL Server Authentication] is selected as the authentication method, specify also the user name used to connect to SQL Server and its password.

3. When the firewall is set on the PC, register it as an exception.

Refer to "Register the Program or Port to the Rule of the Reception of the Firewall" (P.28) and set target programs and ports as exceptions.

4. Log on to the report server with an administrator permission.

5. Start Microsoft Edge and input the following address in the address bar.

`http://localhost/Reports_{Instance name}/`

Example: `http://localhost/Reports_FXAW/`

The report manager starts.

6. Perform the following steps in report manager.

#### ■ SQL Server 2012

- Click [Folder Settings].
- Click [New Role Assignment].
- Input [Group or user name] as follows.  
`{Active Directory domain name}\{Main server name}$`  
 Example: `Domain\Server$`
- Select the check box in the browser.
- Click [OK].

#### ■ SQL Server 2016

- Click [Manage folder].
- Click [Add group or user].

- (3) Input [Group or user] as follows.  
 {Active Directory domain name}\{Main server name}\$  
 Example: Domain\Server\$
- (4) Select the check box in the browser.
- (5) Click [OK].

## Set up the Main Server

Set up the PC for the main server

1. Install SQL Server 2019 on the PC as necessary.  
 For the required settings for SQL Server, refer to “Install SQL Server” (P.23).



In the following cases, this procedure is not required.

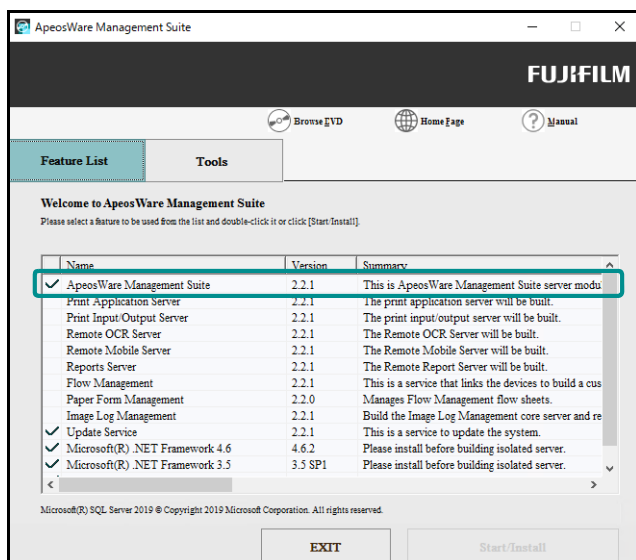
- When a separate database server is set up
- When using SQL Server 2019 included in the installer
- When SQL Server is already installed

2. Install ApeosWare Management Suite by performing the following steps.
  - (1) Insert the Edition media of the DVD-ROM into the DVD drive.
  - (2) When the window to select language appears, select the language to use and click [OK].



When the window is not displayed, double-click “Launcher.exe” on the root of DVD-ROM.

- (3) Double-click [ApeosWare Management Suite] on the displayed window.



- (4) After that, follow the instruction on the screen and below descriptions to install.

Enter the serial number of ApeosWare Management Suite on the [Enter Serial Number] screen. The serial number is written in the “License Certificate” packed in the product package of ApeosWare Management Suite.

If you enter the serial number of trial edition, the trial edition will be installed.

You can import the file of the serial number list. Refer to “About List File of Serial Numbers” (P.19).



- When using ABBYY OCR by setting up an image log server as a separate server, Scan OCR Option is

- not required. Register the ABBYY OCR license on the image log server in accordance with the procedure in “Install Image Log Server.” (P.49).
- The Scan OCR Option license is required in the cases below. Register the Scan OCR Option license on the main server.
  - When setting up the OCR server as a separate server
  - When using OmniPage OCR by setting up the flow management server as a separate server
  - When using OmniPage OCR by setting up the image log server as a separate server
- A Scan OCR Option license is required for a separate server that uses OmniPage OCR.
- To use cost management functionality in the Enterprise Edition, display the [Setup Type] screen and then select the [Enable Cost Recovery Feature] check box.



**Note**  
When the print application server is set up as a separate server, make sure to uncheck the checkbox of [Enable Cost Recovery Feature]. Even when it is activated, the cost management is not available.

- The [IIS Website Settings] screen is used to set the Internet Information Service website. When executing “If ApeosWare Management Suite Server Is Changed to SSL” (P.17) select [Select and use the existing website from IIS] and specify the previously created website. Attach a check mark to [Enable SSL Configuration] for [Binding Settings].
- On the [SQL Server Information] screen, specify the database to be used by ApeosWare Management Suite and the connecting method.
  - When automatically installing SQL Server 2019 Express included in the installer Select [Newly Install SQL Server 2019 Express Edition].
  - When SQL Server is already installed or a separate database server is set up Select [Use existing SQL Server], click [Browse], and then select the desired database instance.  
For a local database, specify “localhost\{Instance name}” and for a separate database specify “{Host name of the database}\{Instance name}”. Example: localhost\FXAW, DBSVR\FXAW  
When [SQL Server Authentication] is selected as the authentication method, specify also the user name used to connect to SQL Server and its password.
- On the [Report Server Information] screen, specify the information of the report server.
  - When setting a separation report server  
Select [Install Report Server in Another Server] and specify the URL of the report server as shown below.  
http://{Host name or IP address of the report server}/ReportServer\_{Instance name}  
Example: http://192.0.2.1/ReportServer\_FXAW
  - When installing the report function in the main server  
Select [Install Report Server in the Same Server].
- If License Activator (a tool to activate license) starts during the installation, refer to “Activating the License via the Internet” (P.57).

**3.** After the installation of ApeosWare Management Suite is complete, double-click [Update Service] on the [Features List] tab.

As the installer starts, install Update Service following the instructions on the screen.

**4.** When the firewall is set on the PC, register it as an exception.  
Refer to “Register the Program or Port to the Rule of the Reception of the Firewall” (P.28) and set target programs and ports as exceptions.

# Setting Up a Print Application Server

This section describes the procedure of setting up PC in case of a print application server is set up.



## Note

- The print application server and the print input/output server cannot coexist in the same system.
- Do not set up several distributed servers at the same time. If set up at the same time, the distributed servers may not be set up correctly.



## Refer

If several distributed servers are set up at the same time, refer to “When Distributed Print Servers Are Not Displayed Correctly After Installation” (P.64).

## 1. Install SQL Server 2019 on the PC as necessary.

For the required settings for SQL Server, refer to “Install SQL Server” (P.23).



## Note

In the following cases, this procedure is not required.

- When a separate database server is set up
- When using SQL Server 2019 included in the installer
- When SQL Server is already installed

## 2. Install ApeosWare Management Suite by performing the following steps.

(1) Insert the Edition media of the DVD-ROM into the DVD drive.

(2) When the window to select language appears, select the language to use and click [OK].

When the window is not displayed, double-click “Launcher.exe” on the root of DVD-ROM.

(3) Double-click [Print Application Server] on the displayed window.

(4) After that, follow the instruction on the screen and below descriptions to install.

- When the [Enter Serial Number] screen is displayed, enter the serial number of ApeosWare Management Suite. The serial number is written in the “License Certificate” packed in the product package of ApeosWare Management Suite.

If you enter the serial number of trial edition, the trial edition will be installed.

You can import the file of the serial number list. Refer to “About List File of Serial Numbers” (P.19).

- Specify the host name or IP address of the main server on the [Enter Connection Destination Main Server] screen.
- The [IIS Website Settings] screen is used to set the Internet Information Service website. When executing “If ApeosWare Management Suite Server Is Changed to SSL” (P.17) select [Select and use the existing website from IIS] and specify the previously created website. Attach a check mark to [enable SSL ConfigurationE] for [Binding Settings].
- Specify the database for the print management feature and its connection method on the [SQL Server Information] screen.
  - When automatically installing SQL Server 2019 Express included in the installer Select [Newly Install SQL Server 2019 Express Edition].
  - When SQL Server is already installed Select [Use existing SQL Server], click [Browse], and then select the desired database instance.

Use the following format to specify the local database: localhost\{Instance name}.

Example: localhost\FXAW

When [SQL Server Authentication] is selected as the authentication method, specify also the user name used to connect to SQL Server and its password.
- If License Activator (a tool to activate license) starts during the installation, refer to “Activating the License via the Internet” (P.57).

3. After the installation of ApeosWare Management Suite is complete, double-click [Update Service] on the [Features List] tab.  
As the installer starts, install Update Service following the instructions on the screen.
4. When the firewall is set on the PC, register it as an exception.  
Refer to "Register the Program or Port to the Rule of the Reception of the Firewall" (P.28) and set target programs and ports as exceptions.

## Update Setting File

In the print application server configuration, jobs issued when the main server is down are listed and printed after the recovery of the main server, so Web.config, which is a setting file must be updated.



### Note

When adding or changing the user of ApeosWare Management Suite, do not use user ID used in the past. If the job list of on demand prints is displayed with a new user, print jobs registered with the previous user may be listed.

For the update of a setting file, use the "ChangeJobListTarget.exe" tool. This tool is stored in "{Installation folder}\Utils\ChangeJobListTarget".

A setting file is updated if an option is specified to the end of the tool and it is executed.

Example:

ChangeJobListTarget.exe -s enable

ChangeJobListTarget.exe -s disable

If "-s enable" is specified, the key of the setting file UseUserIDJobList is set to "true". If "-s disable" is specified, it is set to "false".



### Note

- When updating UseUserIDJobList, IIS is recycled after the execution of the tool, so stop IIS beforehand to execute it. For details on how to stop IIS, refer to "How to stop IIS" (P.45).
- Execute the update of UseUserIDJobList with the main server and print application server respectively.

## How to stop IIS

1. Select [Start] > [Control Panel] > [AdminTools] > [Service].
2. On the [Service] screen, double-click [World Wide Web Publishing Service].  
The [Properties of World Wide Web Publishing Service] screen is displayed.
3. Click [Stop].  
The World Wide Web Publishing Service is stopped.



### Note

It may take 2 to 3 minutes for the stop of the World Wide Web Publishing Service.

## Setting files

Updated setting files are as shown in the following.

- Main Server
  - {Installation folder}\WebApp\Admin\Web.config
  - {Installation folder}\WebApp\MFD\Web.config
  - {Installation folder}\WebApp\PopupUI\Web.config
  - {Installation folder}\WebApp\User\Web.config

- Print Application Server
  - {Installation folder}\WebApp\MFD\Web.config
  - {Installation folder}\WebApp\PopupUI\Web.config

## Setting Up a Print Input/Output Server or a Mobile Server

This section describes the procedure of setting up PC in case of a print input/output server or a mobile server is set up.



### Note

- The print application server and the print input/output server cannot coexist in the same system.
- Do not set up several distributed servers at the same time. If set up at the same time, the distributed servers may not be set up correctly.



### Refer

If several distributed servers are set up at the same time, refer to "When Distributed Print Servers Are Not Displayed Correctly After Installation" (P.64).

1. Install ApeosWare Management Suite by performing the following steps.
  - (1) Insert the Edition media of the DVD-ROM into the DVD drive.
  - (2) When the window to select language appears, select the language to use and click [OK].  
When the window is not displayed, double-click "Launcher.exe" on the root of DVD-ROM.
  - (3) Double-click the server to set up on the displayed window.  
In case of print input/output server
    - [Print Input/Output Server]
 In case of mobile server
    - [Remote Mobile Server]
  - (4) After that, follow the instruction on the screen and below descriptions to install.
    - Specify the host name or IP address of the main server on the [Enter Connection Destination Main Server] screen.
    - The [IIS Website Settings] screen is used to set the Internet Information Service website.  
When executing "If ApeosWare Management Suite Server Is Changed to SSL" (P.17) select [Select and use the existing website from IIS] and specify the previously created website. Attach a check mark to [Enable SSL Configuration] for [Binding Settings].
2. After the installation of ApeosWare Management Suite is complete, double-click [Update Service] on the [Features List] tab.  
As the installer starts, install Update Service following the instructions on the screen.
3. When the firewall is set on the PC, register it as an exception.  
Refer to "Register the Program or Port to the Rule of the Reception of the Firewall" (P.28) and set target programs and ports as exceptions.

## Setting Up OCR Server

To set up an OCR server, perform the following steps.

- (1) Install ApeosWare Management Suite to the OCR server.
- (2) Execute OCR Config Utility on the main server



### Note

- A license of the Scan OCR Option is required per an OCR server. Register the Scan OCR Option license on the main server.

- Do not set up several distributed servers at the same time. If set up at the same time, the distributed servers may not be set up correctly.



If several distributed servers are set up at the same time, refer to “When Distributed Print Servers Are Not Displayed Correctly After Installation” (P.64).

## Install ApeosWare Management Suite to the OCR server.

1. Install ApeosWare Management Suite by performing the following steps.
  - (1) Insert the Edition media of the DVD-ROM into the DVD drive.
  - (2) When the window to select language appears, select the language to use and click [OK].  
When the window is not displayed, double-click “Launcher.exe” on the root of DVD-ROM.
  - (3) Double-click [Remote OCR Server] on the displayed window.
  - (4) After that, follow the instruction on the screen and below descriptions to install.
    - Specify the host name or IP address of the main server on the [Enter Connection Destination Main Server] screen.
    - The [IIS Website Settings] screen is used to set the Internet Information Service website.  
When executing “If ApeosWare Management Suite Server Is Changed to SSL” (P.17) select [Select and use the existing website from IIS] and specify the previously created website. Attach a check mark to [Enable SSL Configuration] for [Binding Settings].
2. After the installation of ApeosWare Management Suite is complete, double-click [Update Service] on the [Features List] tab.  
As the installer starts, install Update Service following the instructions on the screen.
3. When the firewall is set on the PC, register it as an exception.  
Refer to “Register the Program or Port to the Rule of the Reception of the Firewall” (P.28) and set target programs and ports as exceptions.

## Execute OCR Config Utility on the main server

1. Double-click the following executable file on the main server.
  - File location:
 

{Installation folder}\Utils\OCRConfigUtility

{Installation folder} is as follows if no change is made on the initial settings.

“C:\Program Files\FUJIFILM\ApeosWare MS”

The installation folder for Flow Management Option, Paper Form Editor, and Paper Form Management is as shown below.

“C:\Program Files (x86)\FUJIFILM\ApeosWare MS”
  - File name
 

FujiFilm.FB.ApeosWare.OCRConfigUtility.exe
2. Delete the main server host name or IP address.  
When the OCR Config Utility is configured with main server information, OCR processing is performed in parallel on the main server and OCR server. Delete the main server configuration to perform OCR processing on the OCR server only.

3. Click [Add Server].
4. Enter the host name or IP address of the OCR server and the Port used, and click [Add].
5. Repeat the Step 2 and 3 for each OCR server set up.

## Setting Up the Flow Server

When installing a flow server, set up the PC by performing the following steps.



### Note

- The main server must be set up on another PC before installing a flow server. When the main server is not set up, refer to “Set up the Main Server” (P.42) and set it up.
- Do not set up several distributed servers at the same time. If set up at the same time, the distributed servers may not be set up correctly.



### Refer

If several distributed servers are set up at the same time, refer to “When Distributed Print Servers Are Not Displayed Correctly After Installation” (P.64).

1. Install or copy the required software (DocuWorks, Network Scanner Utility 2) and files on the PC.



### Refer

“Required Additional Software and Files for Use of the Flow Management Option” (P.18)

2. Install the following programs that appear on the [Features List] tab.  
IIS (Internet Information Services) is automatically installed during the installation of .NET Framework if not already installed.
  - Microsoft® .NET Framework 4.6.2
  - Microsoft® SQL Server® 2019



### Note

When Microsoft® .NET Framework 3.5 is not installed, enable (add) it from "Add Role and Function wizard" in the server manager.

3. Install Flow Management by performing the following steps.
  - (1) Double-click [Flow Management] on the [Features List] tab.
  - (2) After that, follow the instruction on the screen and below descriptions to install.
    - On the [Enter Serial Number] screen, enter the serial number written on the “license certificate”. When installing as trial edition, click [Next] without entering anything.
    - Select [FM Isolated Configuration] on the [Specify Setup Type] screen.
    - Specify the database that Flow Management uses and the connection method on the [Specify Database Server] screen.  
Click [Browse] of [Database Server Name] to select the instance of the database to use.  
For a local database, specify “localhost\{Instance name}” and for a separate database specify “{Host name of the database}\{Instance name}”. Example: localhost\FXAW, DBSVR\FXAW  
When [SQL Server Authentication] is selected as the authentication method, specify also the user name used to connect to SQL Server and its password.



### Note

For the database used for Flow Management, make sure to specify the same database as ApeosWare Management Suite.

- When [Specify Shared System ID] is displayed, perform the following steps.



When you do not use the flow that was created by Flow Management on another PC:

(1) Select [Not Specify Shared System ID].

- When you use the flow that was created by Flow Management on another PC:

(1) Select [Specify Shared System ID].

(2) Click [Browse] and select Shared System ID File.

The default name is "AWFMSystemIdDownload\_{YearMonthDateHourMinuteSecond}.ini".

- If License Activator (a tool to activate license) starts during the installation, refer to "Activating the License via the Internet" (P.57).



#### Note

- The following options can be installed when an applicable language is selected with the DVD-ROM included in the product package of ApeosWare Management Suite.
  - OCR for DocuWorks Multi Language Option (supported by languages other than English and Japanese)
  - OCR for DocuWorks English License
- The following options can be installed when an applicable language is selected in the system locale of Windows.
  - Attribute Processing Option
  - Database Query Option

## 4. When the installation of is Flow Management complete, double-click Update Service on the [Features List] tab.

As the installer starts, install Update Service following the instructions on the screen.

## 5. Install other software on the [Features List] tab as necessary.



#### Note

For the database used for Paper Form Management, make sure to specify the same database as ApeosWare Management Suite.

## 6. When the firewall is set on the PC, register it as an exception.

Refer to "Register the Program or Port to the Rule of the Reception of the Firewall" (P.28) and set target programs and ports as exceptions.



#### Note

After that, if you install DocuWorks or Network Scanner Utility 2 after creating the flow, reboot the PC or Flow Management service after installation. Otherwise, the flow works incorrectly.

## Install Image Log Server.

When installing the Image Log Server, install the PC with the following procedure.



#### Note

- Before installing the Image Log Server, the main server needs to be installed in another PC. If the main server is not installed, refer to "Set up the Main Server" (P.42) and install it.
- The Image Log core server and Image Log receiving server can be installed in a same server or different servers. You can use the main server as an Image Log core server and install only the Image Log receiving server separately. Install the Image Log core server and Image Log receiving server on a PC with the following procedure.
- When installing the Image Log receiving server in the distributed configuration, install the core server first.
- Specify the built-in hard disk as the installation destination folder, user data storage folder, and work pool folder.

## 1. Install the following program under the [Features List] tab.

When IIS (Internet Information Services) is not installed, it is automatically installed upon installation of .NET Framework.

- Microsoft® .NET Framework 4.6.2



When Microsoft® .NET Framework 3.5 is not installed, enable (add) it from the "Add Roles and Features Wizard" of Server Manager.

## 2. Install Image Log Management with the following procedure.

(1) Double-click [Image Log Management] in the [Features List] tab.

(2) Then follow the instructions on the screen and explanation given below.

- Enter the following serial number in the "license certificate" in the [Enter Serial Number] screen based on the server configuration.

When installing as a trial version, click [Next] without entering anything.

- Image Log core server license  
ApeosWare Management Suite 2 Image Log Management Option Registering Server License (MSDS)
- Image Log receiving server license  
ApeosWare Management Suite 2 Image Log Management Option Receiving Server License (MSDT)
- ABBYY OCR license  
ApeosWare Management Suite 2 Image Log Management Option OCR License (MSDU) or ApeosWare Management Suite 2 Image Log Management Option OCR CJKE Thai License (MSDV)



- When the Image Log core server license only is specified, the Image Log core server is installed.
- When the Image Log receiving server license only is specified, the Image Log receiving server is installed.
- When both the Image Log core server license and Image Log receiving server license are specified, the Image Log server is installed.
- When using the OCR feature in the Image Log receiving server, either the ABBYY OCR license or Scan OCR Option license is required.
  - When using ABBYY OCR, register the ABBYY OCR license to the Image Log receiving server.
  - When using OmniPage OCR, register the Scan OCR Option license to the main server.
  - One Scan OCR Option license is required for each separation server that uses OmniPage OCR.
- When installing the Image Log core server to main server, select [Install on main server].
- When installing the Image Log core server and/or Image Log receiving server to other servers, select [Install on a different server from main server].
- In the case of the distributed configuration, specify the database used by Image Log Management and connection method in the [Specify database server] screen.

If the database is not installed in the main server, click [Browse] in [Database server name] and select the instance of the database to use.

In the case of a distributed database, specify "Database Server Host Name }%{Instance Name}".  
Example: DBSVR%FXAW

When [SQL Server authentication] is selected as the authentication method, also specify the user name and password to be used for connection to SQL Server.
- When the [IIS Web site settings] screen is displayed, set up the Web site of Internet Information Service.

When executing "If ApeosWare Management Suite Server Is Changed to SSL" (P.17), select [Select and use specified Web site from IIS] and specify the Web site that is created in advance. Select the checkbox of [Use SSL configuration] in [Bind Settings].



As the database to be used for Image Log Management, make sure to specify the database used for ApeosWare Management Suite.

## 3. When installation of ApeosWare Management Suite, double-click [Update Service] in the [Features

List] tab.

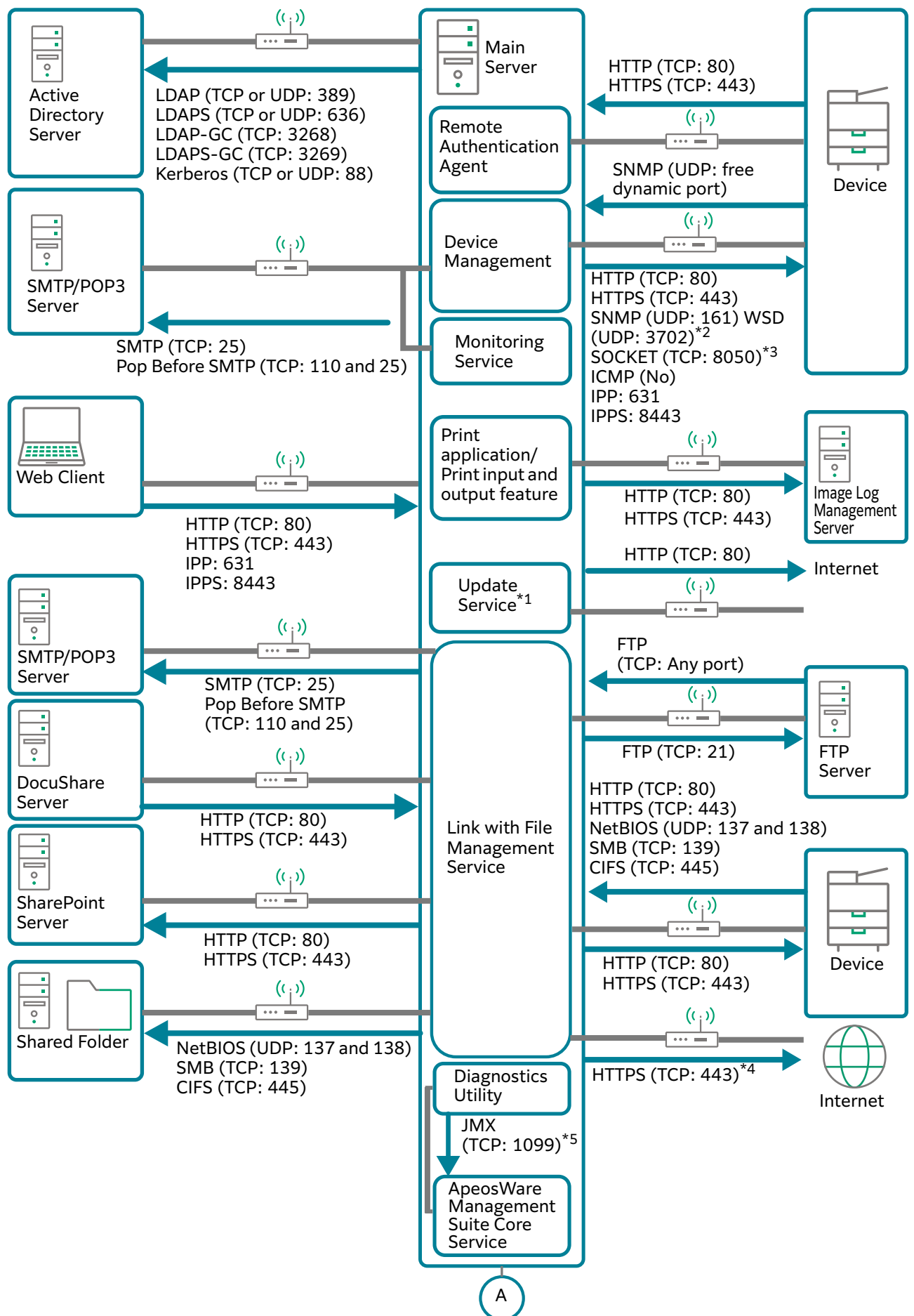
When the installer is activated, install Update Service according to the instructions on the screen.

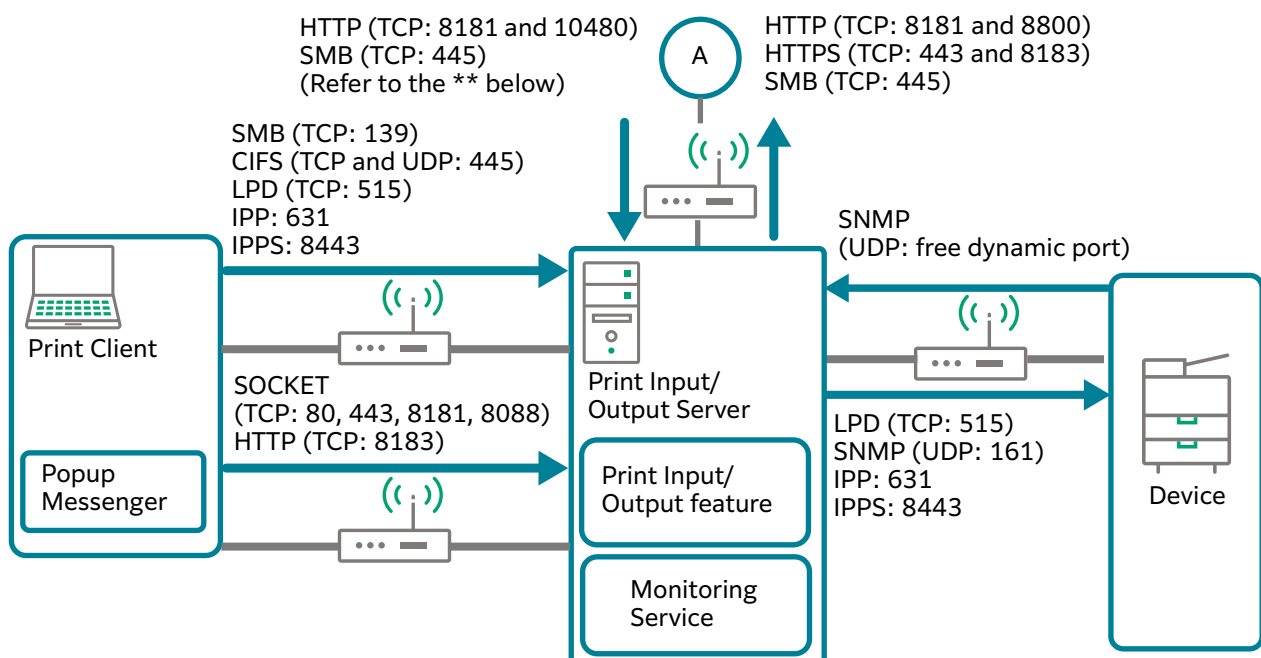
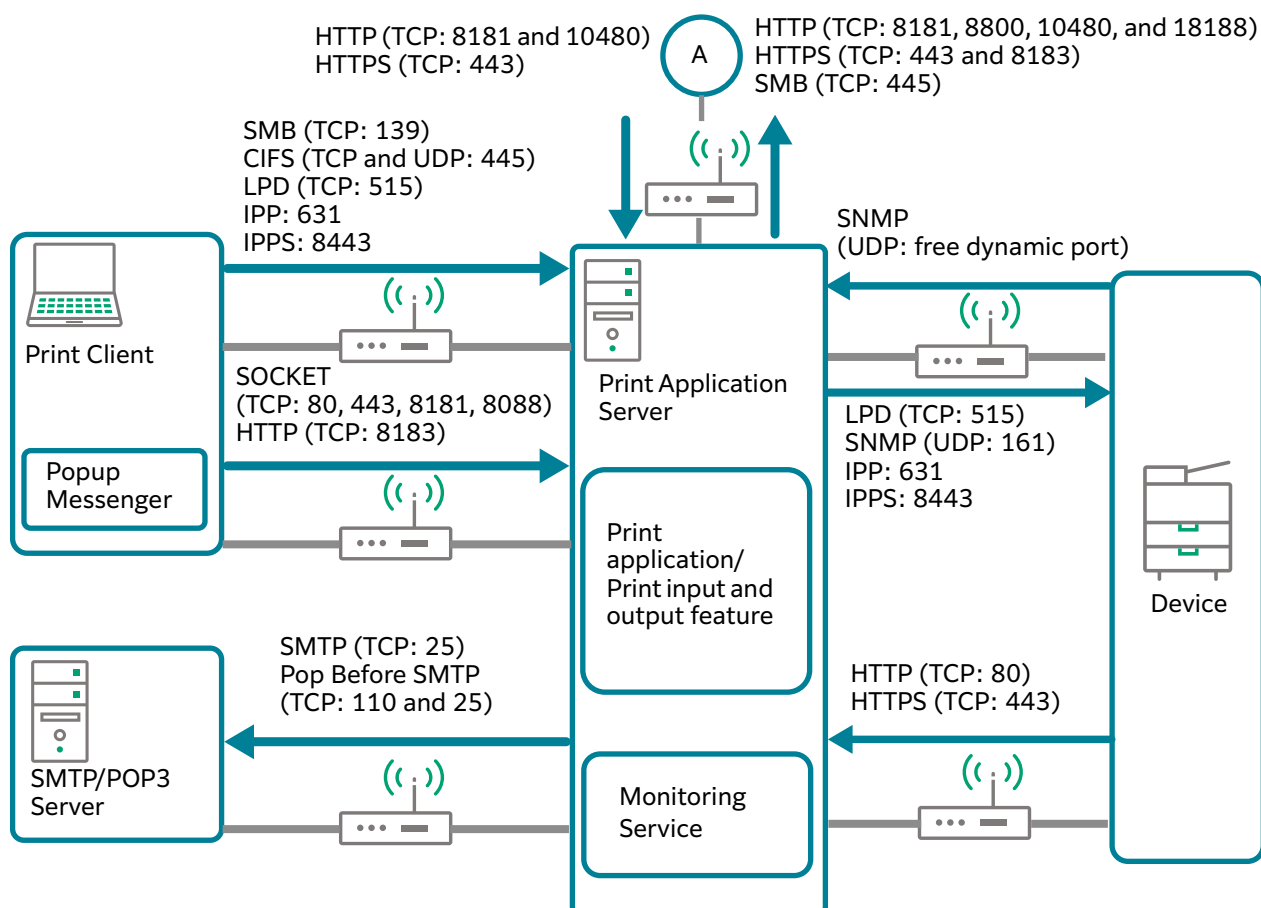
4. When firewall is installed on the PC, make an exception registration.

As referencing "Register the Program or Port to the Rule of the Reception of the Firewall" (P.28), set exceptions of target programs and ports.

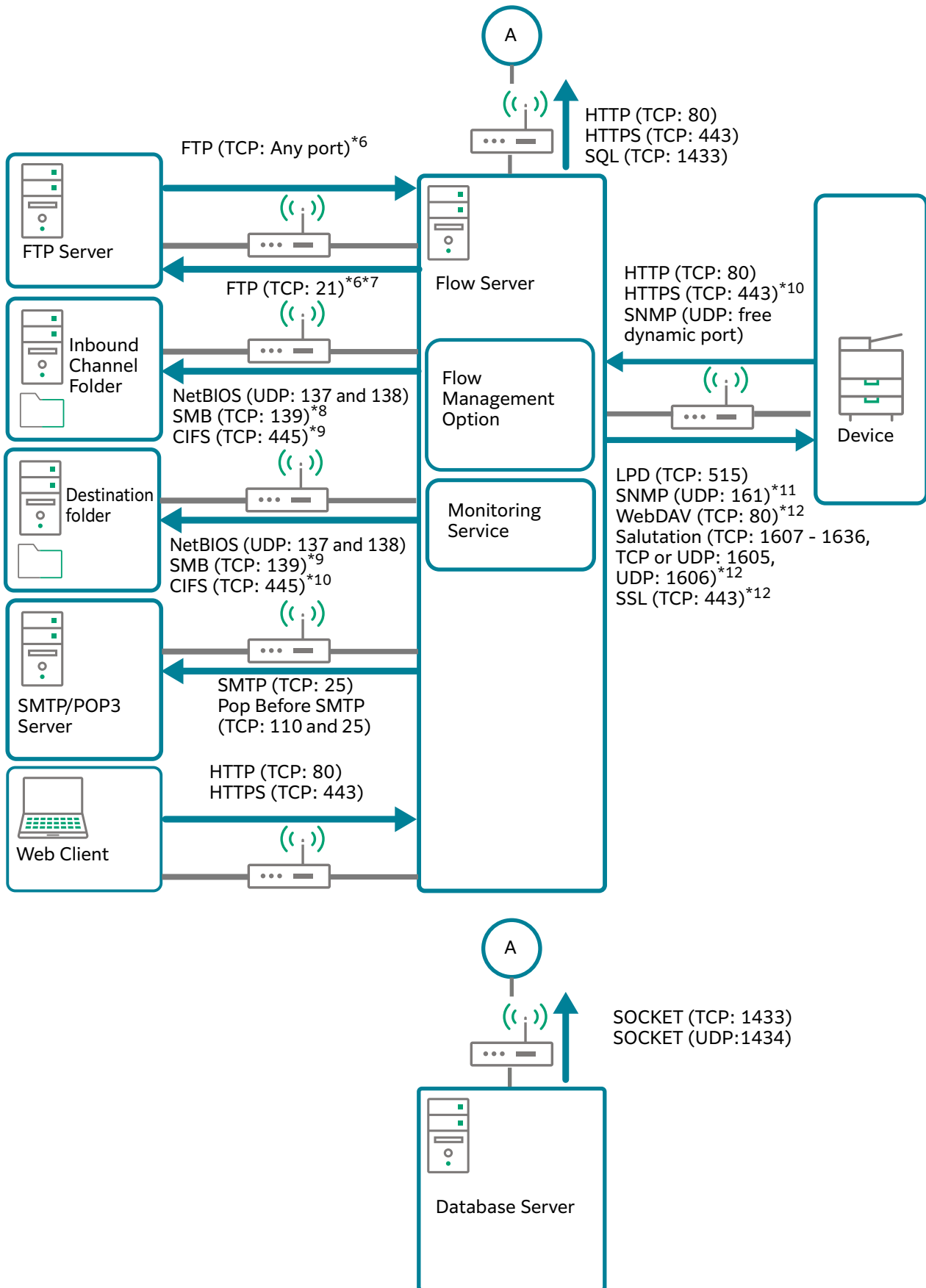
## Register the Port to the Router as an Exception

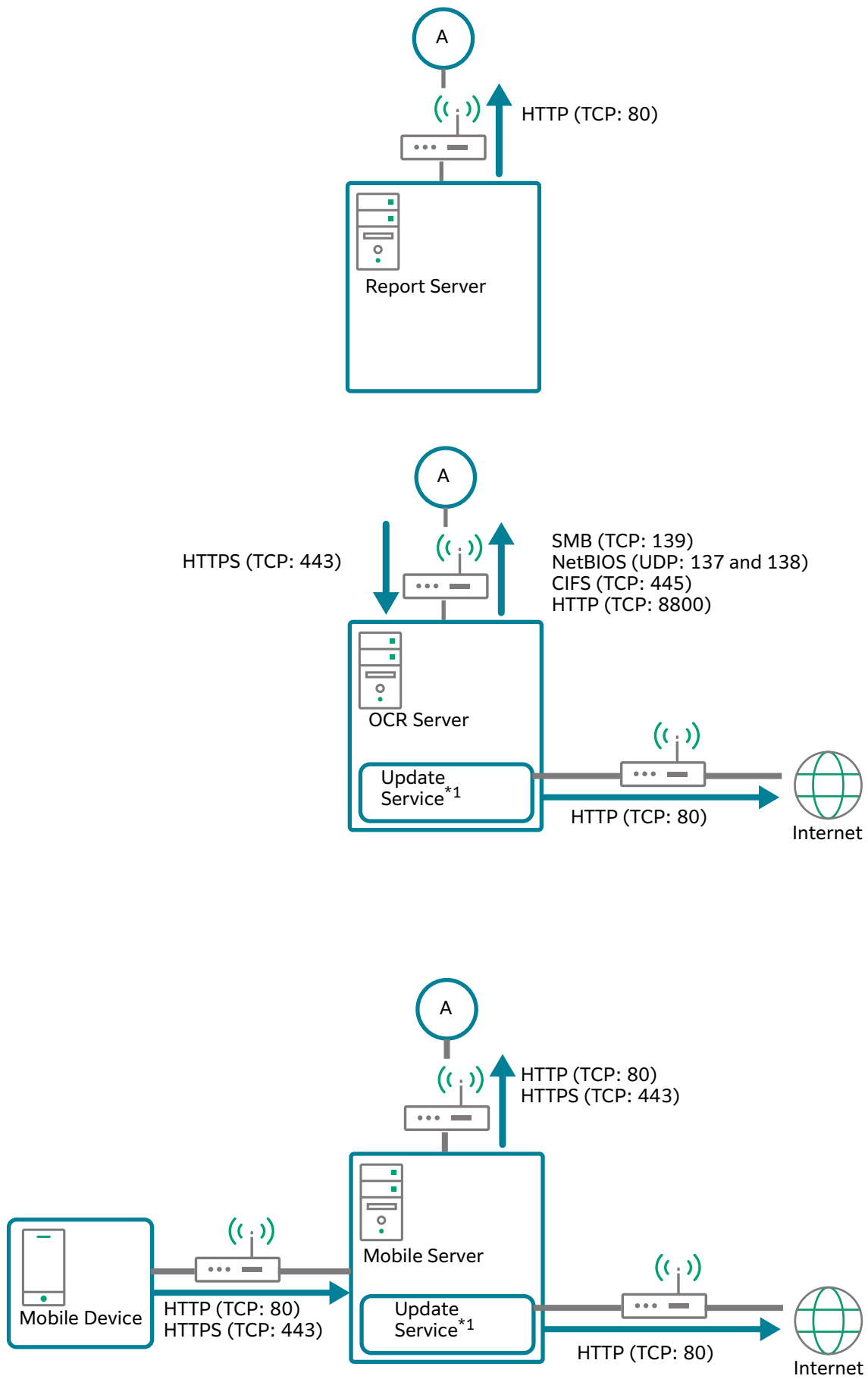
This section describes the protocols and the port numbers allowed when you connect the ports with the devices via the router from ApeosWare Management Suite server. If the port number has been changed on the external server or the device, set them to the contents changed.

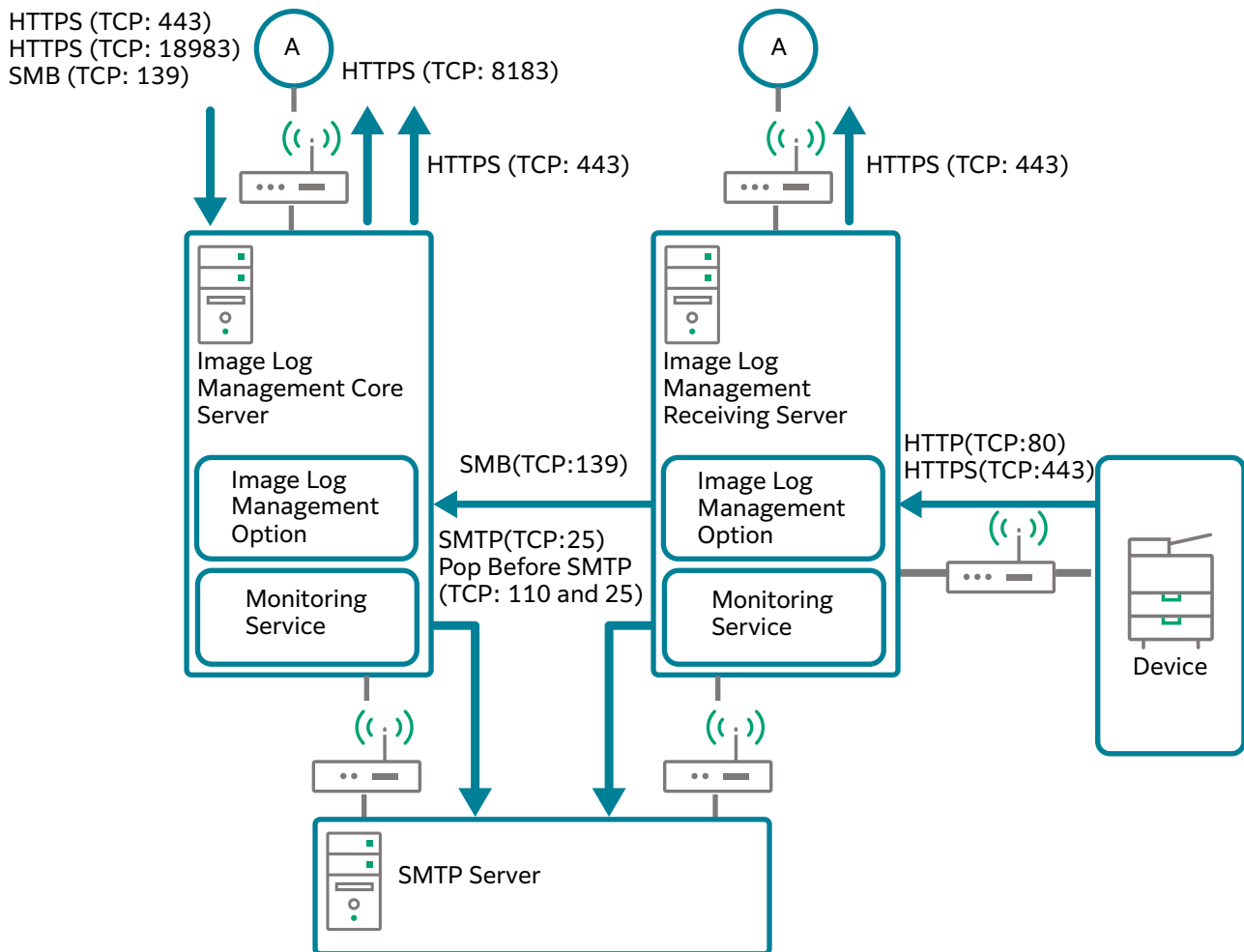




\*\*Set [Inbound Rules] of Windows Firewall to allow the following two connections.  
 Windows Management Instrumentation (WMI-IN)  
 Windows Management Instrumentation (DCOM-IN)







- \*1 Also applicable to installations on other servers or clients.
- \*2 To search a device by WSD. WSD stands for Web Services on Devices.
- \*3 To send the settings to the XCP Plugin in authenticating the custom
- \*4 Is required when using Working Folder, Salesforce, or Google Drive.
- \*5 Use this when retrieving information of ApeosWare Management Suite using Diagnostics Utility.
- \*6 It is not necessary to register a port exception for the router since it will be used within the ApeosWare Management Suite server.  
It is required when storing the document in the folder on the FTP server by using [Save to Folder] function.
- \*7 The ports except 21 can be also set.
- \*8 This is required to set when corresponding to either of the following.
  - To store the document in the common folder by using [Save to Folder] function
  - To output the CSV file of the document to the shared folder by using [Document and Attributes Table Output] function
  - To use the [Form Analysis] feature
  - To use the [Save Form Analysis to File] feature
- \*9 It is required when importing the document from the common folder by using the [Folder] function.
- \*10 It is required when importing the scan document by using [Link to Web Applications] function.
- \*11 It is required when printing or faxing the documents by using [Printer Output] function.
- \*12 Required to import documents from the box via the [Device Folder] function. Set WebDAV or Salutation depending on the device connection method. The setting differs as per the model. SSL (TCP: 443) must be set when using WebDAV with SSL encryption for device communication.

## Installing Tools on the Client PC

Install tools on the client PC as necessary.

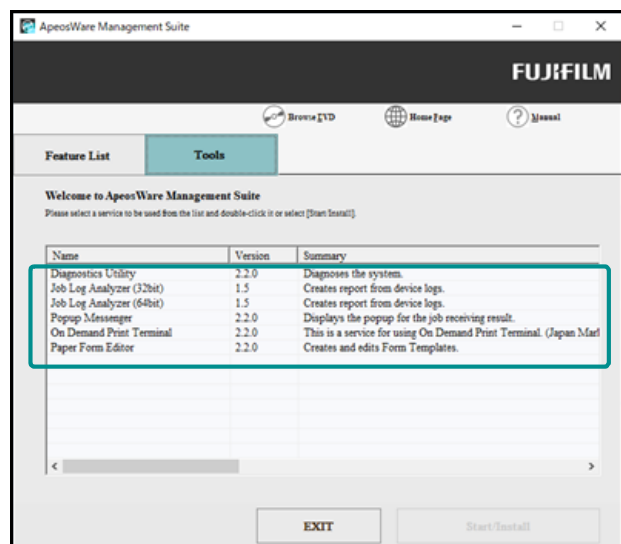




Refer

For details on the installation of Popup Messenger, refer to “Install Popup Messenger” in Features Guide.

1. Insert the Edition media of the DVD-ROM into the DVD drive.
2. When the window to select language appears, select the language to use and click [OK].
3. Click the [Tool List] tab.  
When installing Update Service, click the [Features List] tab.
4. Double-click the required tools.



After that, follow the instruction on the screen.

## License Activation

You are required not only to install software and options but to activate the license. You can use them for only 30 days without activating license.

License activation is required to keep using the software.



Note

When you use SQL Server Standard, license activation and deactivation are not required.

## Activating the License via the Internet

When your PC has Internet connection and is able to communicate with the license activation server via https protocol (SSL), you can activate your license via the Internet.

1. Select [FUJIFILM ApeosWare Management Suite] > [License Authentication] on Startup menu in Windows program.  
The license management screen is activated.
2. Click [License Registration].
3. Enter the serial number and click [Next].
  - When entering the serial number manually
    - (1) Select [Serial Number (Enter Text)].

(2) Enter the serial number.

(3) Click [Add].

The serial number you entered is added to the list.

■ When entering the serial number from a file

By saving the serial number to a file in advance, you can load it into License Activator from the file.

To describe multiple serial numbers in the file, make sure each of the four-digits is delimited by a hyphen (-), and each serial number is located on a separate line, delimited by a line break, as shown below.

1111-2222-3333-4444-5555-6666

2222-3333-4444-5555-6666-7777

(1) Select [Serial Number (Import File)].

(2) Click [Browse] to select the file.

4. Select [Use the Internet to Activate License (Recommended)] and click [Next].

5. Enter [Email Address] and [Password] specified in user registration for “FUJIFILM BI Direct” and click [Next].

License activation is performed via the Internet.



In order to receive up-to-date information via e-mail, select [E-mail delivery is required for information related to this product].

6. When the license activation is complete, click [Completed].

7. Check the registered license, and click [Exit].

## Activating the License with File

### Creating the license activation information file

1. Select [FUJIFILM ApeosWare Management Suite] > [License Authentication] on Startup menu in Windows program.

The license management screen is activated.

2. Click [License Registration].

A dialog box to enter the serial number is displayed.

3. Enter the serial number and click [Add].

The entered serial number is displayed.

4. Select [Execute License Authentication Using File] and click [Next].

A screen to enter the account information of “FUJIFILM BI Direct” is displayed.

5. Enter [Email Address] and [Password] specified in user registration for “FUJIFILM BI Direct” and click [Next].

A screen to specify the output destination of the license activation file is displayed.

6. Click [Browse] and specify the output destination and file name of the license activation file and click [Next].

The license activation file is output with the specified output destination and file name.

The completion screen is displayed.



The file name is set to "activationinfor.dat".

7. Click [Finish].
8. Click [Exit].  
The confirmation screen is displayed.
9. Click [Yes].  
The license management screen is ended.
10. Copy the output license activation file to a PC that can be connected to the Internet using USB memory, etc.

## Uploading the license deactivation file

1. Start a web browser on a PC that can be connected to the Internet.
2. Enter the URL of the file upload page of "FUJIFILM BI Direct" in the [Address] field of the web browser.  
[https://direct-fb.fujifilm.com/ap1/license/bulk\\_activation/upload?proc=activation](https://direct-fb.fujifilm.com/ap1/license/bulk_activation/upload?proc=activation)  
The login screen of "FUJIFILM BI Direct" is displayed.
3. Enter [User ID (Email Address)] and [Password] and click [Login]. The page to upload files is displayed.
4. Confirm that the [Authentication] tab is selected and click [Browse].
5. Select the output license activation file and click [Open...].



You can upload the license activation file by directly dragging and dropping it.

6. Confirm that the selected file is displayed in the File field and click [Send].  
[Processing of the file is accepted] is displayed.

## Downloading the license file

When you receive an e-mail that notifies completion of license activation processing, download the license file from "FUJIFILM BI Direct."

1. Receive an e-mail that is sent by "FUJIFILM BI Direct" to notify completion of license activation processing.
2. Click the URL in the [Results List] screen in the email to display the [Results List] screen of FUJIFILM BI Direct on the web browser.
3. Confirm that the [Result] field of the receipt number shown in the email is "OK" and click [Download].  
The license file is downloaded.
4. Copy the output license activation file to a PC with ApeosWare Management Suite installed using USB memory, etc.

## Activating the license using the license file

1. Select [FUJIFILM ApeosWare Management Suite] > [License Authentication] on Startup menu in

Windows program.

The license management screen is activated.

2. Click [High Function].  
The screen to select a function is displayed.
3. Select [License File Import] and click [Next].  
A screen to specify a license file is displayed.
4. Perform the steps as shown below.
  - (1) Click [Browse] and specify the license file downloaded in "Downloading the license file" (P.59).
  - (2) Click [Next].  
License activation starts. When processing is finished, the completion screen of license activation is displayed.
5. Click [Finish].
6. Click [Exit].  
The confirmation screen is displayed.
7. Click [Yes].  
The license management screen is ended.

## Delete serial number of software

If you have more than one serial number for one software application and have installed the software using the wrong serial number, you can delete the serial number.

1. Select [FUJIFILM ApeosWare Management Suite] > [License Authentication] on Startup menu in Windows program.  
The license management screen is activated.
2. Click [High Function].
3. Select [Delete Serial Number] and click [Next].
4. Select software or an option to delete the serial number. If deleting all, click [Select All/Deactivate All].
5. Click [Next].
6. If the check screen is displayed, check it and click [OK].  
The serial number is deleted.
7. Click [Exit].

## Enter a serial number

When adding options after ApeosWare Management Suit is installed, or activating the license with another serial number, enter the serial number by performing the following steps.

In case you enter the incorrect serial number, delete the number as "Delete serial number of software" (P.60), and then perform the following steps.

### How to enter the serial number

For the first time to activate license

For the first time to activate license, start the installer for modification and enter the serial number. For information on how to operate, refer to "Entering a serial number with the installer for modification" (P.61)

As for the following options, even if license authentication is executed for the first time, activate the License Activator and enter the serial number. Refer to "Entering a serial number with "Entering a serial number with LicenceActivator (for the second time or after)" (P.62).

- Scan & Connect for OneDrive Device License
- OCR for DocuWorks Japanese Option
- ApeosWare Management Suite 2 Image Log Management Option OCR License
- ApeosWare Management Suite 2 Image Log Management Option OCR CJKE Thai License

### For the second time or after to activate license

When activating additional license to the option whose license was already activated, the operation methods vary depending on the option.

If adding the following options, activate the License Activator and enter the serial number. Refer to "Entering a serial number with LicenceActivator (for the second time or after)" (P.62)

- Device License
- Scan OCR Option(OmniPage OCR)
- Scan & Connect for DocuShare Device License
- Scan & Connect for SharePoint Device License
- Scan & Connect for Salesforce Device License
- Scan & Connect for SharePoint Online Device License
- On Demand Print Terminal License
- Additional OS Parser Option
- Mobile User License

To add options other than the mentioned previously, use the installer for modification even it is second time or after.

For example, if any Device License is not activated and you want to activate 100Device License, use the installer for modification. After that, if you want to add 500Device License, use License Activator.



#### Note

Enter the serial numbers of ApeosWare Management Suite 2 Image Log Management Option OCR License and ApeosWare Management Suite 2 Image Log Management Option OCR CJKE Thai License on the Image Log Receiving Server.

## Entering a serial number with the installer for modification

1. On the [Programs and Features] window of Windows, perform the following steps.
  - (1) Click [ApeosWare Management Suite]
  - (2) Click [Change].
2. Click [Modify].  
After that, follow the instruction on the screen.

### 3. Enter the serial number.

The serial number is written on the "license certificate" included in the product package of ApeosWare Management Suite.



#### Note

You can import the file of the serial number list. Refer to "About List File of Serial Numbers" (P.19)

### 4. Click [Finish].

The license management screen is activated and executes license authentication.

After that, follow the instruction on the screen.



#### Note

If the entry screen for a serial number is displayed, enter the serial number entered in procedure 3 and click [Next].

## Entering a serial number with LicenceActivator (for the second time or after)

### 1. Select [FUJIFILM ApeosWare Management Suite] > [License Authentication] on Startup menu in Windows program.

The license management screen is activated.

### 2. Select [Enter Serial Number].

### 3. Click [Next].

Perform the following steps.

### 4. Enter the serial number.

The serial number is written on the "license certificate" included in the product package of ApeosWare Management Suite.



#### Note

You can import the file of the serial number list. Refer to "About List File of Serial Numbers" (P.19)

### 5. Click [Add].

### 6. Click [Next].

### 7. As the message of the completion of entering the serial number is displayed, click [Next].

On and after, refer to "Activating the License via the Internet" (P.57) or "Activating the License with File" (P.58).

## FUJIFILM Business Innovation Support Centre

For license activation assistance, contact your local FUJIFILM Business Innovation Customer Support Centre or select "make a support request" at Online Support website (<https://support-fb.fujifilm.com/>).

## What to do after the setup

Describes what to do after the setup is complete.

## Log in ApeosWare Management Suite.

Confirm that you can log in to ApeosWare Management Suite from a web browser.

For the information on how to log in, refer to “Logging in to ApeosWare Management Suite” in “Features Guide”.

## Settings of Single Sign-On Feature

The Single Sign-On feature is disabled in the settings after installation. To use the Single Sign-On feature, enable it with the following procedures.

When Single Sign-On is enabled, if the user logged in the client PC and the user registered in ApeosWare Management Suite are identical, the login screen is not displayed but the user can access the administrator screen or the user screen.



Refer

What is Single Sign-On? → “Single Sign-On” in Installation and Operation Guide

1. From [Server Manager] or [Turn Windows Features On or Off], add [Windows Authentication] of IIS security.
2. From the list of sites in the left pane of the Internet Information Services (IIS) Manager, select {Name of website you use} > [Login].



Note

{Name of website used} is [ApeosWare Management Suite] if you selected [Create new website.] on the [IIS Website Settings] screen during the installation. If you selected an existing website, the name of the existing website is applied.

3. Double-click [Authentications] of [Features View].
4. Enable [Windows authentication], and disable [Anonymous authentication].

## When Distributed Print Servers Are Not Displayed Correctly After Installation

If several distributed print servers are installed at the same time, they may not be set up correctly. If they are not set up correctly, re-install the print servers.

1. Remove the network cables of the print servers not displayed on the print server list screen.



Note

By removing the network cables, set a status in which the main server cannot be communicated.

2. Uninstall the print servers.



Note

In the "Save the files in the storage location for next use?" dialog, select the [No] option.

3. Connect the network cables to the print servers to set a status in which the main server can be communicated.
4. Reinstall the print servers.
5. After the installation completion of the print servers, reboot the main servers.



# 2 Repairing, Changing, and Uninstalling the Software

## Repair a Program

Corrupted files may be repairable by performing a repair installation.

Performing repair installations does not change any settings or configured environments.



### Note

When performing repair installation, the version reverts to the one at the time of initial installation, and update/fix patch programs are deleted. When update/fix patch programs are applied after installation, apply the update/fix patch programs again using Update Service.

1. Perform the following steps on [Programs and features] on Windows.
  - (1) Click [ApeosWare Management Suite].
  - (2) Click [Change].

2. Click [Repair].  
After that, follow the instruction on the screen.

## How to Change a Program (Adding options)

If adding an option, execute an authentication operation from the License Activator. An option not in the License Activator is added by change installation. If adding an option by change installation, start it after preparing the serial number of the option.



### Note

When performing change installation, the version information becomes the same as initially installed. When updating was executed using Update Service, never fail to perform updating again using Update Service. Add options that can be used in versions before updating before updating. When the options are added after updating, you need to perform updating again.

1. Perform the following steps on [Programs and features] on Windows.
  - (1) Click [ApeosWare Management Suite].
  - (2) Click [Change].
2. Click [Change].  
After that, follow the instruction on the screen.
3. Enter the serial number.  
The serial number is written in the "License Certificate" packed in the product package of ApeosWare Management Suite.
4. Click [Finish].  
The license management screen is activated and executes license authentication.

After that, follow the instruction on the screen.



#### Note

- If the entry screen for a serial number is displayed, enter the serial number entered in procedure 3 and click [Next].
- For operations on license authentication, refer to “What to do after the setup” (P.62).

## Uninstall a Program

### Overview

- In All-in-One Configuration Setup

Perform steps of “Flowchart to Uninstall a Program” described below. If Flow Management and Image Log Management are installed, uninstall Flow Management and Image Log Management first.

If any features are added to Flow Management, uninstall them from Flow Management first.

- For Distributed Configuration

Perform the following “Flowchart to Uninstall a Program” in the following order in accordance with your server configuration.

(1) Flow server or separate servers other than report and database servers

(2) Main Server

(3) Report Server

(4) Database Server



#### Note

- In case of print application server
  1. Uninstall the print application.
  2. Delete the database.
  3. Reboot the main server.
- In case of print input/output server
  1. Delete the print input/output server uninstalled from the administrator screen of the main server.
  2. Uninstall the print input/output server.

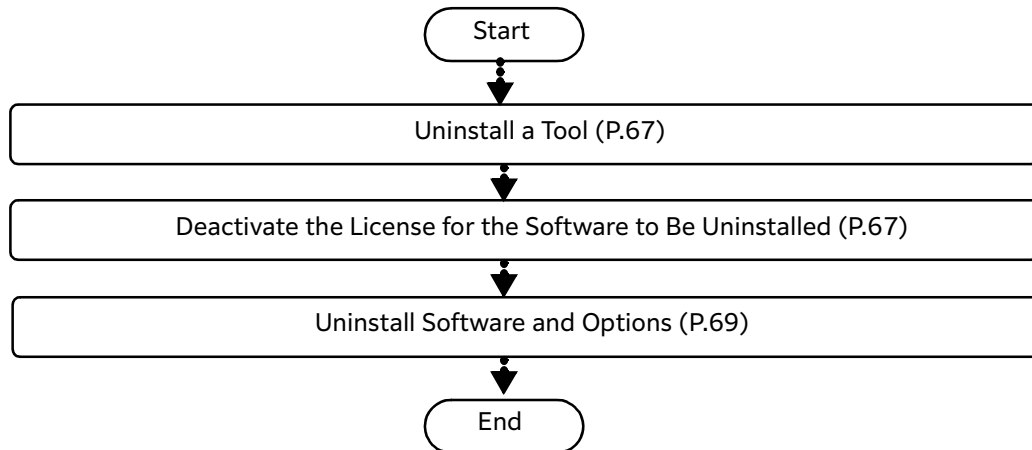
### Flowchart to Uninstall a Program



#### Note

- Custom Authentication, FUJIFILM BI Direct Federation Settings, or other feature are used, plugins, custom services, and other software necessary to use these features will be installed in devices. Before uninstalling ApeosWare Management Suite, move devices to the device group for which [Authentication/Accounting Mode] is set to [No Authentication Required] and then update device configurations accordingly. Plugins and custom services are removed from devices once device configurations are successfully updated.

- When uninstalling and reinstalling ApeosWare Management Suite, install it in the same folder as last time.



## Uninstall a Tool

1. Perform the following steps on [Programs and features] on Windows.

(1) Click the tool to be uninstalled.

See the table below about correspondence between tool names and names on the window.

Tool Names	Names on the Window
Job Log Analyzer	FUJIFILM Job Log Analyzer {Version number}
Paper Form Editor	FUJIFILM Paper Form Editor {Version number}
Paper Form Management	FUJIFILM Paper Form Management {Version number}
Popup Messenger	FUJIFILM Popup Messenger {Version number}
Update Service	FUJIFILM Update Service {Version number}

(2) Click [Uninstall].

After that, follow the instruction on the screen.

## Deactivate the License for the Software to Be Uninstalled

### Deactivate the license via internet


1. Select [FUJIFILM] > [License Administration Screen] on Startup menu in Windows program.  
The license management screen is activated.
2. Click [High Function].
3. Select [Deactivate the License] and click [Next].
4. Select software to deactivate license authentication. If deactivating all, click [Select All/Deactivate

All].

5. Click [Next].
6. Select [Deactivate License Authentication Using E-Mail] and click [Next].
7. If the check screen is displayed, check it and click [OK].  
License authentication is deactivated.
8. Click [Exit].  
The confirmation screen is displayed.
9. Click [Yes].  
The license management screen is ended.

## Deactivate the License with File

### Creating the license deactivation file

1. Select [FUJIFILM] > [License Administration Screen] on Startup menu in Windows program.  
The license management screen is activated.
  2. Click [High Function].  
The screen to select a function is displayed.
  3. Select [Deactivate License] and click [Next].
  4. Confirm that the product name (serial number) to deactivate the license is selected and click [Next].
  5. Perform the steps as shown below.
    - (1) Select [Deactivate License Authentication Using File].
    - (2) Click [Browse] and select the output destination and file name of the license deactivation file.
-  **Note**
- As for the default value, the file name is "LRT.dat", and the output destination is the desktop.
- (3) Click [Next].  
The license deactivation file is output with the specified folder and file name, and the completion screen is displayed.
6. Click [Finish].
  7. Click [Exit].  
The confirmation screen is displayed.
  8. Click [Yes].  
The license management screen is ended.
  9. Copy the output license activation file to a PC that can be connected to the Internet using USB memory, etc.

### Uploading the License Deactivation File

1. Start the web browser.
2. Enter the URL of the file upload page of "FUJIFILM BI Direct" in the [Address] field of the web browser.  
[https://direct-fb.fujifilm.com/ap1/license/bulk\\_activation/upload?proc=activation](https://direct-fb.fujifilm.com/ap1/license/bulk_activation/upload?proc=activation)

The login screen of “FUJIFILM BI Direct” is displayed.

3. Enter [User ID (Email Address)] and [Password] and click [Login].  
The page to upload files is displayed.
4. Select the [Deactivate] tab and click [Browse].
5. Select the output license activation file and click [Open...].  
You can directly drag and drop the license activation file.
6. Confirm that the selected file is displayed in the File field and click [Send].  
“Processing of the file is accepted” is displayed.
7. Receive an e-mail that is sent by “FUJIFILM BI Direct” to notify completion of license activation processing.
8. Click the URL in the [Results List] screen in the e-mail to display the [Results List] screen of FUJIFILM BI Direct on the web browser.
9. Confirm that the [Result] field of the receipt number shown in the e-mail is “OK”.

## Uninstall Software and Options

1. Perform the following steps on [Programs and features] on Windows.
  - (1) If Flow Management is installed, click FUJIFILM Flow Management 2.2].
  - (2) Click [Uninstall].
  - (3) If Image Log Management is installed, click [FUJIFILM Image Log Management 2.2].
  - (4) Click [Uninstall].
  - (5) Click [ApeosWare Management Suite].
  - (6) Click [Uninstall].

After that, follow the instruction on the screen.



### Note

- When “Database cannot be deleted” is displayed during uninstallation and uninstallation fails, execute uninstallation again from [Add and Remove Programs]. Repeating uninstallation operation enables correct uninstallation.
- When uninstalling Flow Management Option updated by Update Service, the version displayed in an alert message may be different from the currently used version.  
In this case, check the currently used version in the Version column of “Programs and Features”; if no problem is found, keep uninstalling it.

## How to Delete the Database Manually

This section describes how to manually delete the database used in ApeosWare Management Suite by using the components provided by SQL Server.

The case below requires to manually delete the database.

For normal uninstallation, this procedure is not required.

Execute this procedure when the database cannot be deleted for some reason upon uninstallation of ApeosWare Management Suite. Uninstall it if you reuse ApeosWare Management Suite no longer and don't need the database. If the database is manually deleted while it is incomplete, for instance, part of the database does not exist, an error may be displayed. In this case, execute the procedure “How

to delete a logical database and a SQL Server login" (P.70) and "How to delete a physical database" (P.72).



#### Note

Don't delete the database during operating ApeosWare Management Suite.

## How to delete a logical database and a SQL Server login

Confirm the following in advance.

- The instance of SQL Server specified during the installation is activated.  
When SQL Server 2019 included in the installer of ApeosWare Management Suite is automatically installed, Instance Name becomes "FXAW."
- ApeosWare Management Suite software is not in operation.

1. Log on as an Administrators group user to the PC with SQL Server installed.

2. Open the command prompt.

3. Enter the following command and log in to the instance.

```
c:\>sqlcmd.exe -E -S(local)\{Instance name specified on installation}
```

The command prompt will be as follows if you log in to the instance correctly.

```
1>
```

4. Execute the following command, and delete the database and the SQL Server login.

```
1>drop database {Data base name}
2>go
1>sp_droplogin {SQL Server login name}
2>go
1>
```

The command prompt is displayed if the database has been deleted successfully.

## 5. Execute the following command, and delete the database and the SQL Server login.

```
1>exit
```

### Database Name and SQL Server Login Name

Database Name and SQL Server Login Name vary depending on the software as the list below.

Software	Data Base Name	SQL Server Login Name
ApeosWare Management Suite	AWMS2	<ul style="list-style-type: none"> <li>• login_scn</li> <li>• login_pm</li> <li>• login_cst</li> <li>• login_jtr</li> <li>• login_dm</li> <li>• login_rms</li> <li>• login_fm</li> <li>• login_um</li> <li>• login_nim</li> <li>• login_sdm</li> <li>• login_mon</li> <li>• login_sf</li> <li>• login_rpt</li> <li>• login_mob</li> <li>• login_awms2</li> <li>• login_ext</li> </ul>
Flow Management Option	<ul style="list-style-type: none"> <li>• FM_DATA</li> <li>• FM_DATA_JP</li> <li>• FM_DATA_LOG</li> <li>• FM_DSH_RESOURCE<sup>*1</sup></li> <li>• FM_NPP</li> <li>• FM_PORTAL_DATA</li> <li>• FM_PRINT_DATA</li> <li>• FM_PROPERTY_MAPPER_DATA</li> <li>• FM_REPOSITORY</li> <li>• FM_REPOSITORY_CENTRAL<sup>*2</sup></li> <li>• FM_USERINTERACTION_DATA</li> <li>• FM_WEBUI_DATA</li> </ul>	<ul style="list-style-type: none"> <li>• AWFMDDataDBUser</li> <li>• AWFMDDataJpDBUser</li> <li>• AWFMDDataLogDBUser</li> <li>• AWFMDshDBUser<sup>*1</sup></li> <li>• AWFMNPPDBUser</li> <li>• AWFMPortalDataDBUser</li> <li>• AWFMPrintDBUser</li> <li>• AWFMPPropertyMapperDBUser</li> <li>• AWFMRRepositoryCentralDBUser<sup>*2</sup></li> <li>• AWFMRRepositoryDBUser</li> <li>• AWFMUerInteractionDBUser</li> </ul>

\*1 Only when Paper Form Management installed.

\*2 Only Enterprise Edition

Run the following command repeatedly as many as the number of database names and SQL Server login names.

For instance, to delete the database of ApeosWare Management Suite, run the command as shown below.

```
1>drop database AWMS2
2>go
1>sp_droplogin login_scn
2>go
1>sp_droplogin login_pm
2>go
(Abbreviated)
1>sp_droplogin login_rpt
2>go
1>sp_droplogin login_mob
2>go
1>
```

Delete the SQL Server login after deleting all the databases if there are some databases.

## How to delete a physical database

Delete the physical file in the database associated with ApeosWare Management Suite by Explorer. This procedure is not required if the physical file has been deleted. The physical file location varies depending on whether it is in Distributed Configuration or in All-in-One Configuration. In the event the file cannot be deleted by Explorer, the logical database may not have been deleted successfully.

If you delete the instance of the SQL server before uninstalling ApeosWare Management Suite, only the physical file remains. In this case, delete the physical database before reinstalling ApeosWare Management Suite if you don't need the database.

### In All-in-One Configuration Setup

1. Delete the physical files in the database associated with ApeosWare Management Suite by Explorer in the following folders.

Software	Folders	Files to be deleted
ApeosWare Management Suite	{ApeosWare Management Suite data storage location folder}\db	<ul style="list-style-type: none"><li>• AWMS2.mdf</li><li>• AWMS2.ldf</li></ul>
Flow Management Option	{Flow Management Option install folder* <sup>1</sup> }\Flow Management\db	<ul style="list-style-type: none"><li>• FM_DATA.ldf</li><li>• FM_DATA.mdf</li><li>• FM_DATA_JP.ldf</li><li>• FM_DATA_JP.mdf</li><li>• FM_DATA_LOG.ldf</li><li>• FM_DATA_LOG.mdf</li><li>• FM_NPP.ldf</li><li>• FM_NPP.mdf</li><li>• FM_PORTAL_DATA.ldf</li><li>• FM_PORTAL_DATA.mdf</li><li>• FM_PRINT_DATA.ldf</li><li>• FM_PRINT_DATA.mdf</li><li>• FM_PROPERTY_MAPPER_DATA.ldf*<sup>2</sup></li><li>• FM_PROPERTY_MAPPER_DATA.mdf*<sup>2</sup></li><li>• FM_REPOSITORY.ldf</li><li>• FM_REPOSITORY.mdf</li><li>• FM_REPOSITORY_CENTRAL.ldf*<sup>2</sup></li><li>• FM_REPOSITORY_CENTRAL.mdf*<sup>2</sup></li><li>• FM_USERINTERACTION_DATA.ldf</li><li>• FM_USERINTERACTION_DATA.mdf</li><li>• FM_WEBUI_DATA.ldf</li><li>• FM_WEBUI_DATA.mdf</li></ul>
Paper Form Management		<ul style="list-style-type: none"><li>• FM_DSH_RESOURCE.ldf</li><li>• FM_DSH_RESOURCE.mdf</li></ul>

\*1 The default value is "C:\Program Files\FUJIFILM\ApeosWare MS".

\*2 Only Enterprise Edition

### For Distributed Configuration

1. Activate the Registry Editor, and confirm SQL Server data storage folder from the Registry key as shown below.

HKLM\SOFTWARE\Wow6432Node\Microsoft\Microsoft SQL Server\MSSQL{SQL Server version}\{Instance name}\Setup\SQLDataRoot

Example:



When SQL Server 2019 included in the installer of ApeosWare Management Suite is automatically installed, the following folder is used.

HKLM\SOFTWARE\Wow6432Node\Microsoft\Microsoft SQL  
Server\MSSQL15.FXAW\Setup\SQLDataRoot

2. Delete the files shown in Step 1 of "In All-in-One Configuration Setup" (P.72) in the folder that was confirmed in Step 1 in Explorer.

# Allocation of Amount of Memory Used

## Overview

In the following cases, the amount of memory used by ApeosWare Management Suite can be set.

- If you want to change the amount of memory allocated to the software of ApeosWare Management Suite
- If the software of ApeosWare Management Suite was added or deleted
- If the amount of memory of PC in which ApeosWare Management Suite was installed was changed

The memory allocation is possible with following features installed on the PC on which the commands are run.

- User Management
- Device Management
- Scan & Connector
- Cost Management
- Print Management
- Flow Management
- Image Log Management
- SQL Server

Specific memory amount is allocated automatically to each feature.



Note

It cannot be set by remote.

## Option

The options of the command "AWMEMCONF.exe" are explained.

Option	Descriptions
-N {Amount of memory allocated to ApeosWare Management Suite}	To ApeosWare Management Suite, the amount of memory entered in {Amount of memory to be allocated to ApeosWare Management Suite} is allocated. Enter the amount of memory in MB. The recommended amounts are 2,048, 4,096, and 8,192. The value that is same as the memory capacity on the PC cannot be specified. If you want to allocate all the memory amount loaded on the PC, run the command without entering anything after "-N". Also, you cannot specify any amount of memory that does not satisfy the memory capacity required by the ApeosWare Management Suite software. After the execution, PC must be rebooted.
-S	It returns to the amount of memory used when ApeosWare Management Suite was installed. After the execution, PC must be rebooted.
-C	The amount of memory allocated to ApeosWare Management Suite is displayed.
-D	If used with an option other than -F, a debug log is output. A debug log is used by our customer engineer or service engineer.
-H or none	Help is displayed.
-F	If executing a command without displaying a check message, use it with an option other than -D.
-V	The version of "AWMEMCONF.exe" is displayed.

## Allocate Amount of Memory Used

The section below explains how to run the command allocating the memory usage amount.

1. Log on to PC in which the amount of memory used is changed with the Administrator authority.
2. Open the command prompt.
3. Input the following command and push the <Enter> key.

```
cd {Path to MST folder}
```

{Path to MST folder} is the following if the initial value is not changed.

- ApeosWare Management Suite  
"C:\Program Files\FUJIFILM\ApeosWare MS\Utils\MST"
- Flow Management  
"C:\Program Files (x86)\FUJIFILM\ApeosWare MS\FM\tools\MST"
- Image Log Management  
"C:\Program Files\FUJIFILM\ApeosWare MS\Image Log Management\Utils\MST"

4. Enter the following command, and then press the <Enter> key.

```
AWMEMCONF.exe -N {Amount of memory allocated to ApeosWare Management Suite (MB)}
```

The recommended amounts of memory are 2,048, 4,096, and 8,192 (MB).

```
AWMEMCONF.exe -N
```



### Note

If the following message is displayed when ApeosWare Management Suite, Flow Management or Image Log Management is installed, select "Case where all memories installed in PC are allocated".  
"The amount of memory allocated cannot be optimized. You can use the system without taking any measures, but it may not operate correctly. After installation is completed, optimize the amount of memory allocated in Memory Configuration. (For how to use Memory Configuration, refer to the manual.)"

5. The following message is displayed. If there is no problem, push <y>.

```
Currently, from the total amount of physical memory {Total amount of physical memory in PC} MB of this computer, {Amount of physical memory allocated currently} MB is allocated to ApeosWare Management Suite. Is it OK to start the setting of the amount of memory allocated? (y/n)
```

The amount of memory based on the command entered in procedure 4 is allocated to ApeosWare Management Suite.

6. If it is finished normally, the following message is displayed. Reboot the PC.

```
The setting of the amount of memory allocated has been completed normally. To reflect the setting, reboot the computer.
```

## Return Amount of Memory Used to Initial Status

Return to the amount of memory used when ApeosWare Management Suite was installed.

1. Log on to PC in which the amount of memory used is changed with the Administrator authority.
2. Open the command prompt.
3. Input the following command and push the <Enter> key.

```
cd {Path to MST folder}
```

{Path to MST folder} is the following if the initial value is not changed.

- ApeosWare Management Suite  
"C:\Program Files\FUJIFILM\ApeosWare MS\Utils\MST"
- Flow Management  
"C:\Program Files (x86)\FUJIFILM\ApeosWare MS\FM\tools\MST"
- Image Log Management  
"C:\Program Files\FUJIFILM\ApeosWare MS\Image Log Management\Utils\MST"

4. Enter the following command, and then press the <Enter> key.

```
AWMEMCONF.exe -S
```

5. The following message is displayed. If there is no problem, push <y>.

Currently, from the total amount of physical memory {Total amount of physical memory in PC} MB of this computer, {Amount of physical memory allocated currently} MB is allocated to ApeosWare Management Suite.

It returns to the amount of memory used when it was installed.

6. If it is finished normally, the following message is displayed. Reboot the PC.

The setting of the amount of memory allocated has been completed normally.  
To reflect the setting, reboot the computer.

## Operation Log

The execution description of "AWMEMCONF.exe" is output as an operation log once a day. The descriptions of operation logs are explained.

### Output destination and file name

- Folder to which operation log is output

```
{User data storage destination}\Data\Common Utility\Memory Configuration\logs
```

The initial status of {User data storage destination} is "{Installation destination drive}\FUJIFILM\ApeosWare MS".

- File name

```
AWMCT-mct-system-{Output year}-{Output month}-{Output day}.log
```

**Note**

The operation log of "AWMEMCONF.exe" is not collected with Diagnostics Utility.

### Output descriptions

The descriptions shown in the following "Items" are output to operation logs being separated by commas.

Items	Descriptions
Date and time	Time of occurrence (Christian year, month, day, hour, minute, second, millisecond and time zone)
Importance	Any of the following <ul style="list-style-type: none"> <li>• INFO</li> <li>• WARN</li> <li>• ERROR</li> <li>• FATAL</li> </ul>
Blank	-
Host name	Name of host executed
Component ID	String for identifying processed component
Blank	-
Blank	-
Operation target	String for identifying classification of processing and operation
Message of component	Log code, information showing cause and information required for handling event
Blank	-
Stack trace	Stack trace at time of error occurrence